



**Applications:** CP backfill tampers are designed to effectively compact soil around foundations and other structures and for compacting backfill in trenches.

The CP-0003 is designed to handle light-to-medium applications; the CP-0004RV is the ideal tool for heavier jobs.

### Features

#### CP-0003 and CP-0004RV

- Maximum power – slow, powerful blows efficiently and quickly compact all types of backfill, including clay and soils containing high percentages of finely crushed or powdered material
- Heat-treated cylinder and chrome plated piston – significantly extend tool life
- Adjustable packing – maintains a positive air seal
- Butt held with clamp screw – for quick, easy replacement
- Exhaust deflector – directs air, moisture and oil away from operator
- Integral oiler – continuously lubricates tool during operation
- Well balanced, smooth operating tool – easily guided by one person



CP-0003



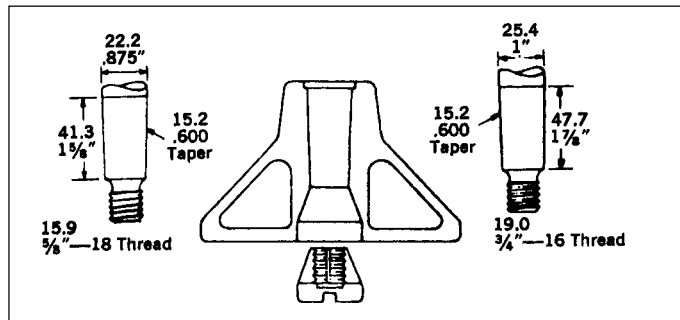
CP-0004

All Models: 1/2" (NPTF) air inlet thread; air consumption: CP-0003 18 cfm at 90 psi, CP-0004RV 28 cfm at 90 psi, aluminum butt.

Catalog Number	Part Number	Valve Type	Bore and Stroke mm (in.)	Blows per minute	Net Weight kg (lb.)	Overall Length mm (in.)	Piston Rod	
							Body Dia. mm (in.)	Butt Size mm (in.)
CP-0003	T019307	Simple Valve	36.5 x 152.4 (1 7/16 x 6)	800	13.6 (30)	1320 (52)	22.2 (7/8)	127.0 (5)
CP-0004-RV	T022292	Ring Valve	57.2 x 152.4 (2 1/4 x 6)	780	19.0 (42)	1270 (50)	25.4 (1)	158.8 (6 1/4)

### Accessories

#### Butts for CP-0003 and CP-0004RV Tamper



#### Mufflers for CP-0003 and CP-0004RV Tampers

Description	Part No.
CP-0003	P126126
CP-0004-RV	P125807

#### Backfill Tamper Butt Part Numbers

Diameter mm (in.)	Material	CP-0003	CP-0004RV
63.5 (2 1/2)	Aluminum	-	P138879
127.0 (5)	Aluminum	P089008	-
158.8 (6 1/4)	Aluminum	-	P089050








## Hose Couplings

### -Universal Hose Couplings

CP Universal Hose Couplings are a rugged one-piece rustproof construction with convenient quarter turn connect/disconnect. Design increases holding power and sealing power with increase of air pressure. Gaskets can't blow out or fall out. Same size coupling end is used on all coupling sizes up to and including 1" (25mm) hose end and pipe thread and sizes for interconnection of sizes. The CP Universal Coupling Gasket is made of high-grade materials that retain their effective resiliency indefinitely. It is easily inserted with the fingers; no special tools are required. Once inserted it cannot fall out or blow out.

### Standard CP Universal Hose Couplings

Description	Size	US Standard Part* Number
 Male thread coupling	3/8" (9.5mm) 1/2" (12.5mm) 3/4" (20mm) 1" (25mm)	NPTF Male pipe thread  C015123 C015122 C015121 C015120
 Female thread coupling	3/8" (9.5mm) 1/2" (12.5mm) 3/4" (20mm) 1" (25mm)	NPTF Female pipe thread  C015128 C015127 C015126 C015125
 Hose end coupling	Hose I.D. 3/8" (9.5mm) 1/2" (12.5mm) 3/4" (20mm) 1" (25mm)	C015134 C015132 C015131 C015130
 CP Universal 3-way coupling		C035021
 CP Universal "Dead-end" coupling		C035019

Rubber Gasket for US Standard Hose Coupling, C-101158 (Box of 25).

Rubber Gasket for European Standard, C085138.

\*One gasket included with each coupling.

### Special Large Size CP Universal Couplings

These couplings have all the advantages and features of Standard CP Universal Couplings except there is no interconnectability with standard size.

Size	Bronze Part* Number
NPTF Male Pipe Thread 1 1/2" (38mm)	C-015145
NPTF Female Pipe Thread 1 1/2" (38mm)	C-015075
Hose I.D. 1 1/2" (38mm)	C-015076

Rubber Gasket for Large Size CP Universal Couplings, C-015071

### Automatic Line Oilers

These line oilers are designed to supply oil for the lubrication of air tools where it is not practical to use stationary lubricators. Fluctuations in line pressure due to starting and stopping of tools cause oil to flow in the line. Oilers should be installed as close to the tools as possible. Automatic line oilers have a needle valve adjustment to permit regulation of oil flow. The oil flow is present at approximately one drop per minute. Rugged castings assure long life under severe conditions.

Part.No No.	Capacity oz.	Inlet and Outlet Thread Size NPT	Overall Length mm (in.)	Net Weight kg (lbs)
C-132965	5	3/4	152 (6)	0.68 (1 1/2)
C-132966	8	1	178 (7)	0.90 (2)
C-137711	11	3/4	178 (7)	1.0 (2.3)
C-137712	16	1	254 (10)	2.0 (4.5)

**Warning:** Always use coupling lock pin, C-142110 (US Standard) to prevent accidental uncoupling of universal hose couplings. Always check for damaged or loose hoses and fittings before operation. Whipping hoses can cause serious injury.



Chicago Pneumatic is proud to introduce a new line of Concrete Vibrators. The CP-1150, CP-2190 and CP-3250 are heavy duty tools designed for pours of low slump concrete in columns, footings, slabs and walls. Each tool has a greater radius of influence which translates to more work accomplished in a shorter period of time. And, unlike electric concrete vibrators, there is no chance of shock or need for extension cords and plugs.

**Features:**

- Three head diameters to choose from: 1 1/2", 2 1/2" and 3" (38, 62.5 and 75mm)
- Variable speed throttle
- In-line lubricator
- Auxiliary air hose
- Locked motor end plates



CP-1150

All models: 1/2" (12.5mm) NPTF air connection

Catalog Number	Part Number	Radius of Influence mm (in.)	Capacity l/s	Vibration per minute	Head Dimensions		Net Weight kg (lb.)	Length w/o Aux. hose mm (in.)	C.F.M Average
					Diameter mm (in.)	Length mm (in.)			
CP-1150	T022138	228.6-254.0 (9 - 10)	319	10,000	38.1 (1 1/2)	457.2 (18)	7.3 (16)	2184.4 (86)	28
CP-2190	T019308	381.0-406.4 (15 - 16)	700	12,000	36.5 (2 1/2)	349.3 (13 3/4)	12.3 (27)	2997.2 (118)	65
CP-3250	T019303	406.4-431.8 (16 - 17)	892	9,000	76.2 (3)	422.4 (16 5/8)	15.9 (35)	2971.8 (117)	85

# Cut-off Saw

Chicago Pneumatic is proud to introduce a new Air Powered Cut-Off Saw. The CP-0044 is a powerful tool driven by a direct drive, 4 hp motor and is designed to cut a variety of surfaces including concrete, asphalt and stone. This direct drive saw has no belts to continually check for tension. The CP-0044 is also engineered for precise balance so less effort is needed to do the job at hand. A built-in oiler provides for continuous lubrication so more time is spent on the job and less time servicing. The CP-0044 is also designed with safety in mind using a standard lock-off trigger to help prevent accidental starting. Also the blade guard can be operated with one hand for convenience.

**Features:**

- Chicago Pneumatic 4 hp motor
- One-hand operation blade guard
- Integral oiler
- Lock-off trigger
- Direct drive operation
- Two position handle



Catalog	Part	Blade Arbor Dia. mm (in.)	No load rpm	Weight with Blade kg (lb)	Overall Length mm (in)	Max. Cutting Depth mm (in)	Blade Cap mm (in)
CP-0044		25.4 (1")	4800	12.7 (28)	673.1 (26 1/2)	101.6 (4")	355.6 (14")



<b>Number</b>	<b>Section</b>	<b>Page</b>
CP-0003	Tamper	29
CP-0004	Tamper	29
CP-0006	Scabbler	14
CP-0009	Rock Drill	18
CP-0010	Pump	27
CP-0014	Rock Drill	18
CP-0020	Pump	27
CP-0022	Rock Drill	17
FL-0022	Demolition Tool	12
FL-0025	Demolition Tool	12
CP-0032	Rock Drill	17
CP-0044	Cut-off Saw	31
CP-0066	Scabbler	14
CP-0069	Rock Drill	17
CP-0077	Pump	28
CP-0111	Demolition Tool	12
CP-0222	Demolition Tool	12
CP-1150	Vibrator	31
CP-1210	Demolition Tool	9
CP-1230	Demolition Tool	9, 11
CP-1240	Demolition Tool	9, 11
CP-2190	Vibrator	31
CP-3250	Vibrator	31
CP-4121	Chipping Hammer	21
CP-4123	Chipping Hammer	22
CP-4125	Chipping Hammer	23
CP-4127	Chipping Hammer	24
CP-4129	Chipping Hammer	25
CP-4181	Buster	13
CP-4180	Buster	13