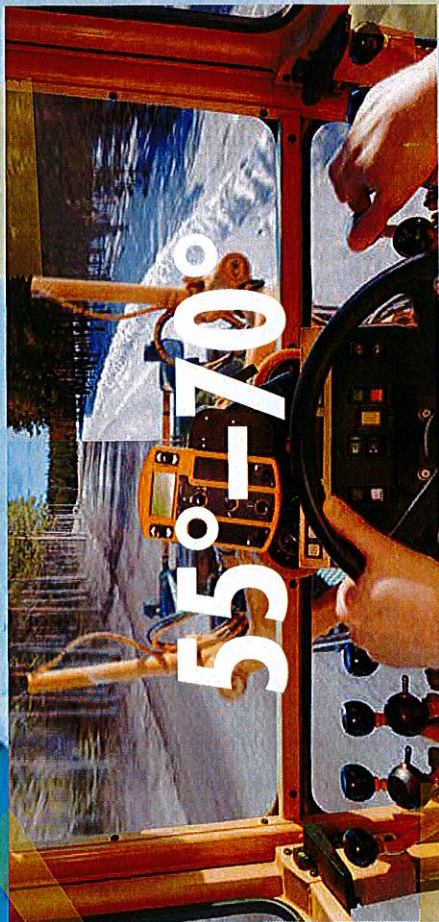


SHARQ FLEXDESIGN

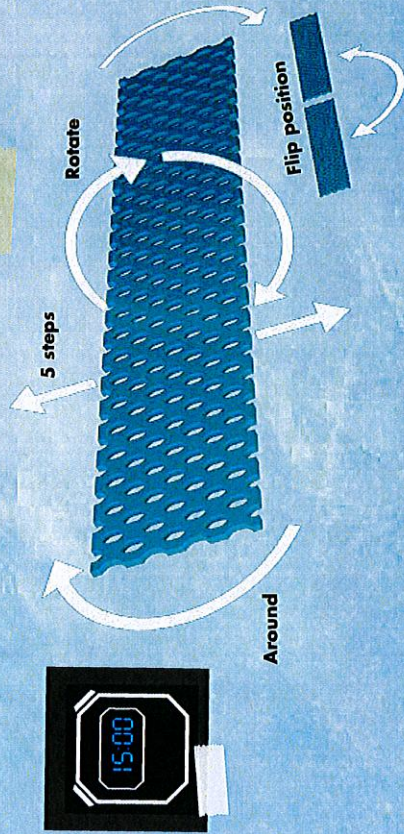


The Sharq system is designed to be flexible and give maximum efficiency. The edges are light weight, easy to handle and can be mounted quickly.

With Sharq P300 and other double punched SharqEdges, it is easy to recover a straight cutting edge on the mold board. With a 5 minute stop on the road side you can solve the problem of a contoured edge line so you can run again with a straight edge line. No need to go back to the workshop to change blades. Saving time and fuel!

The Sharq FlexDesign makes road side edge changing quick and easy. All SharqEdges can easily be moved vertically, horizontally or flipped around easily so edges on the mold board are in a straight line.

We call this unique solution the **Sharq FlexDesign!**



CUSTOMER TESTIMONIALS

Sharq™

DALE PATTERSON

J.D. Irving, Canada: Woodlands (Sussex New Brunswick)

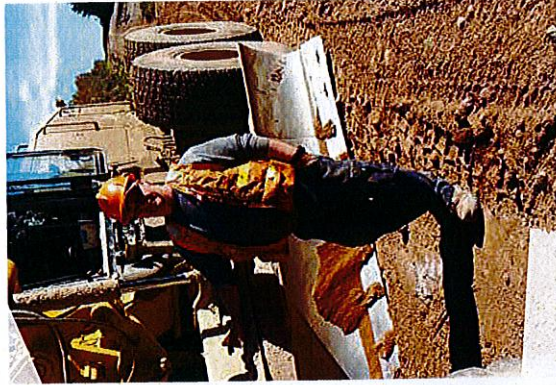
"I could not imagine how it would work here because we were wearing a 1" grader blade on average in 5 days. How would this thin blade last more than a few hours? To my surprise we are averaging about 3 weeks on a set of SharqEdges."

"Fuel consumption has dropped drastically from 24 L/hr on the old blades to 16 L/hr on the SharqEdges."

"We are able to recover more gravel and the holes allow some of the fines to stay on the road with the Sharq P300, something we could never do with conventional grader blades."

"We could only grade about 6 km a day with our old blades compared to 10+ km with the SharqEdges. Plus, the SharqEdges give us a safer road surface winter and summer."

"We are very satisfied with Olefsfors SharqEdges, we are now running the system on 3 graders. We would never go back to the old way."



AL HOTEL / STEVE HULSMAN

Rocky View County, Canada: Rocky View, AB

"The fuel consumption with Sharq is 140-160 liters per day, and with regular grader blades its 200-240 liters a day."

"With regular grader blades you get a slippery surface, with Sharq P300 you get a scarified surface and that helps the sand and salt stay on the road."

"With regular grader blades you throw away 30-40% with Sharq P300 you throw away about 5%."

"Changing blades takes about 1-1.5hrs with regular grader blades, Sharq it takes you 15 min on the road."

"Sharq gives me about 100-120hrs and regular grader blades about 8-40hrs."

"When you get 4 times the wear life on the edges for 50% more cost there is an easy decision."

