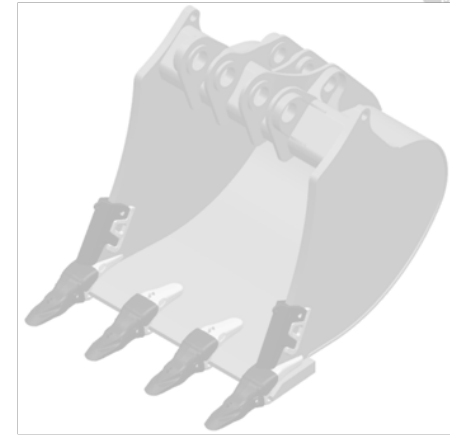




MTG



No limits innovation

-PROMET MINING WING SHROUD ASSEMBLY INSTRUCTIONS-

PROMET MINING WING SHROUD

PARTS NUMBER (each set)



WING SHROUD

PN: 4MX**LS



WELD-ON BASE

PN: 1MX**WBL (2 units)



RETAINER

PN: 2MX**RL



PIN

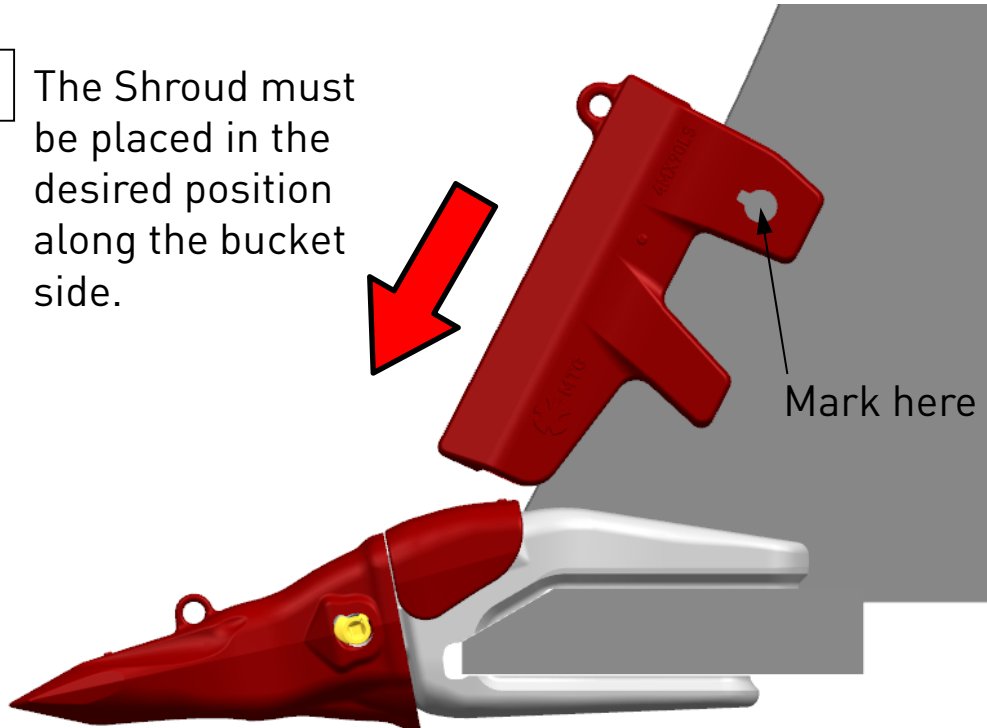
PN: 2MX**PR

** → Wing thickness (from 60 mm to 120mm)

PROMET MINING WING SHROUD

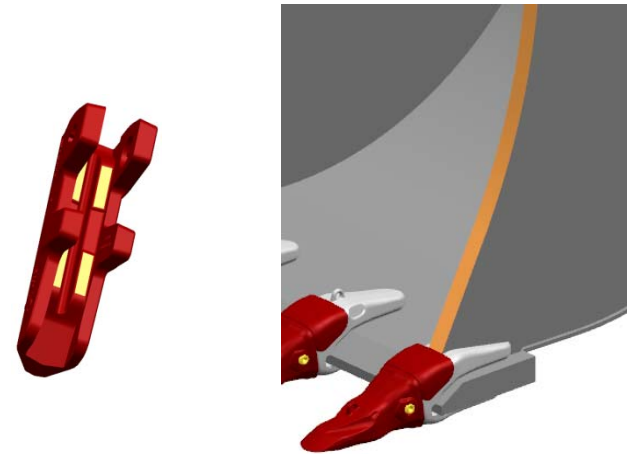
INSTALLATION PROCESS

- 2 The Shroud must be placed in the desired position along the bucket side.



- 3 After placing the shroud in its position, mark the hole on the bucket side. This mark must be concentric with the shroud hole.

- 1 Place the shroud on the wing assuring the front contact between the highlighted surfaces as shown.



- 4 Remove the shroud and drill the hole (\emptyset^{**} mm.).

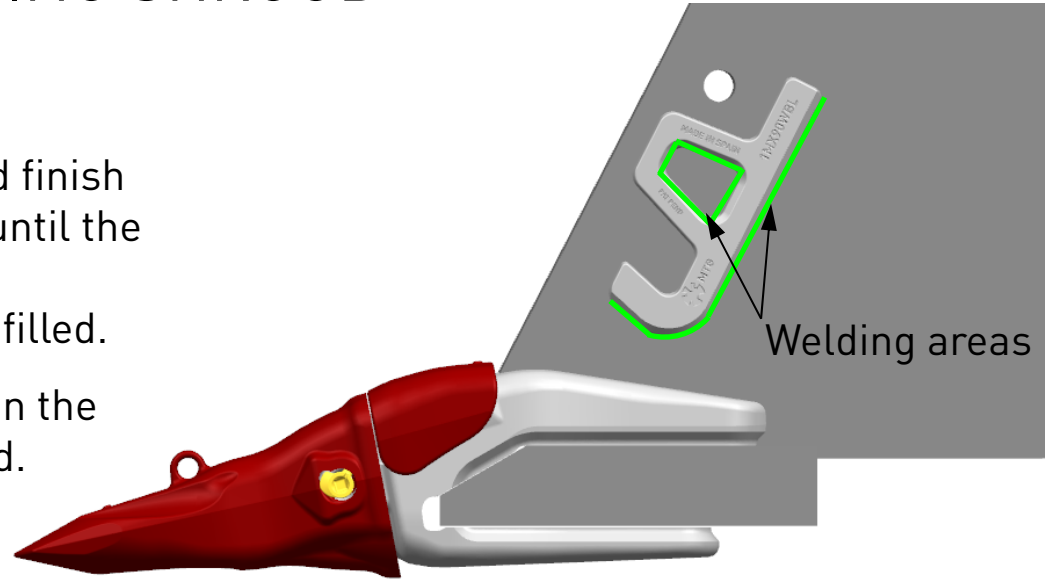
** → 50 for part 4MX90LS

PROMET MINING WING SHROUD

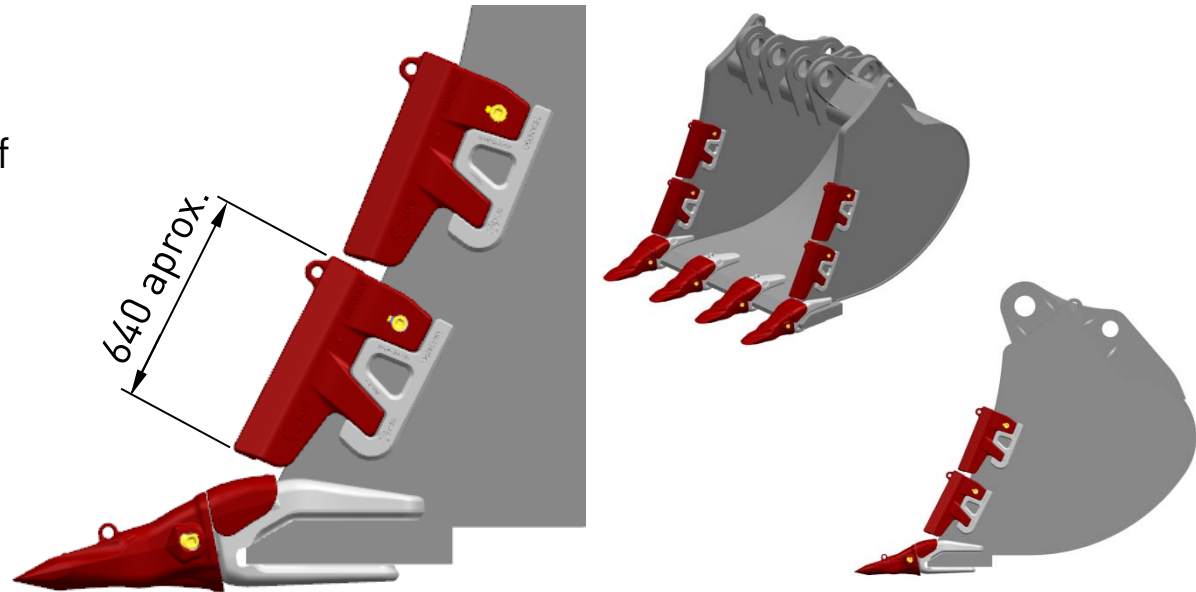
INSTALLATION PROCESS

7 Remove the shroud and finish the welding operation until the welding chamfer at the welding areas are fully filled.

Repeat this operation on the other side of the shroud.



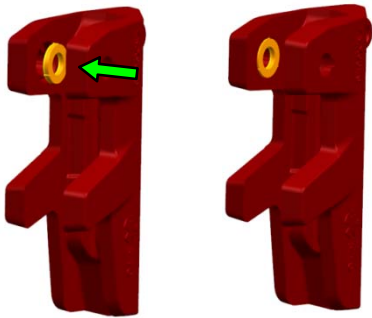
8 Repeat all these steps to install the desired number of shrouds.



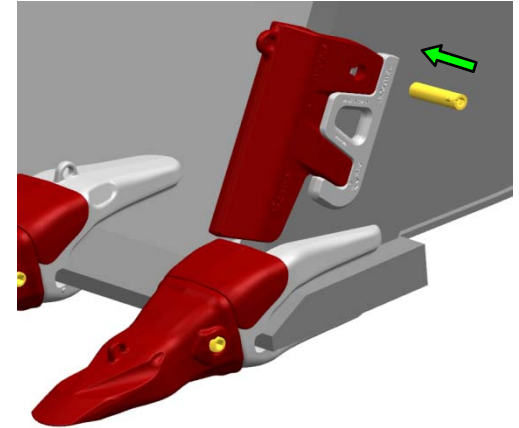
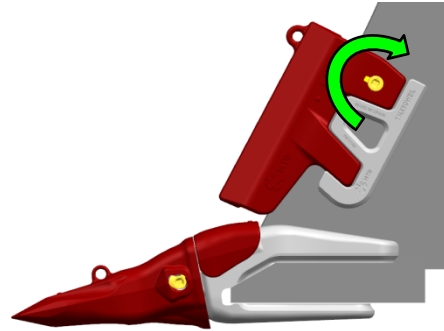
PROMET MINING WING SHROUD

MOUNTING PROCESS

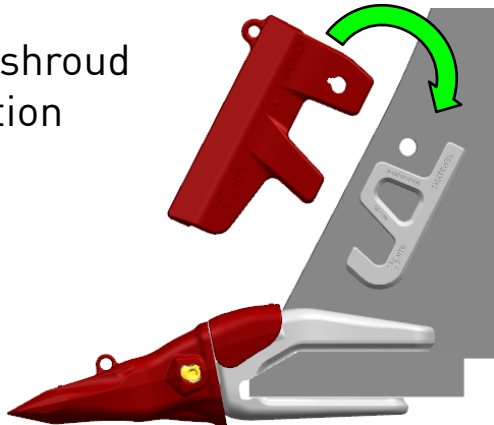
a Place the retainer in its housing assuring that the hard side of the retainer is facing the shroud.



c Insert the pin as shown and turn clockwise until it stops.



b Place the shroud in its position



d To dismount:

- Clean out fines from the square socket cavity of the pin
- Turn the pin anticlockwise and remove it by slightly hitting the opposite side.
- Remove the shroud.