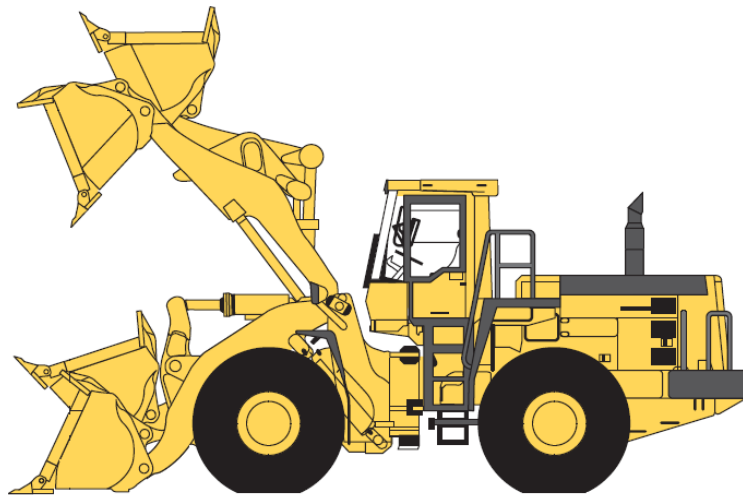




XS SYSTEMS

SERIES RECOMMENDATION CHART FOR LOADERS



November 1, 2004

XS SYSTEMS

SERIES RECOMMENDATION CHART FOR LOADERS

This recommendation chart is based on your machine model and the application in which the machine is used.

Machines are sorted by manufacturer and break out force.

Find your appropriate machine model and match that with the application in which the machine will be used. Select the application based on the majority of the machine work. Always select the more severe application if the percentage of work approaches 50%.

You will find the Definitions for Standard / Heavy Duty Application and Extreme Service Application listed below. This should help you select the appropriate system for your machine.

As an example:

If you have a Komatsu WA600-3 and 50% of the work is in loose, well-shot material, but 50% of the work is in heavy unshot rock, then you should use the Extreme Service recommendation for this machine, the 40 series.

Be realistic when selecting the appropriate series for your machine. Selecting a series that is too small for the machine and application will very likely result in product failure, which will reduce your production and increase your costs. Remember, Hensley guarantees our products to perform, but we will not guarantee our products when abused!

Note: These recommendations are a general guideline. There are many machine modifications and set ups that increase the break out force of the machine. If your machine is specifically designed for more severe work, always go with the Extreme Duty recommendation.

DEFINITIONS

Standard / Heavy Duty - The load on the machine ranges from very little to moderate with some limited, "high load" use. Materials range from light and loose, well-shot, fracturable, to some medium, even heavy shot materials that break up into manageable sizes when excavated. Large slabs of rock do not fit in this category.

Extreme Service – The load on the machine is high, nearing the maximum capabilities of the machine. Materials are heavy un-shot rock or slabs that require the full force of the machine to break out.

XS SYSTEMS SERIES RECOMMENDATION CHART FOR LOADERS

MANUFACTURER	MODEL	BREAKOUT FORCE IN LBS.	RECOMMENDED SERIES SIZE BASED ON	
			APPLICATION	
			STANDARD / HEAVY DUTY	EXTREME SERVICE
AHLMANN	AL6B	7,920	04 Series	05 Series
AHLMANN	AL7C	8,360	04 Series	05 Series
AHLMANN	AL7D	8,360	04 Series	05 Series
AHLMANN	AL8	8,800	05 Series	05 Series
AHLMANN	AL8C	8,800	05 Series	05 Series
AHLMANN	AS7CS	11,880	05 Series	05 Series
AHLMANN	AS10	13,640	05 Series	05 Series
AHLMANN	AS12	22,000	10 Series	15 Series
AHLMANN	AS15	22,440	10 Series	15 Series
AHLMANN	AS18	22,440	10 Series	15 Series
ATLAS	32E	5,254	04 Series	04 Series
ATLAS	32C	5,280	04 Series	04 Series
ATLAS	AR41B	5,720	04 Series	04 Series
ATLAS	42C	6,380	04 Series	04 Series
ATLAS	45	7,190	04 Series	05 Series
ATLAS	AR45B	7,260	04 Series	05 Series
ATLAS	46C	7,700	04 Series	05 Series
ATLAS	AR52C	8,140	04 Series	05 Series
ATLAS	52D	8,580	04 Series	05 Series
ATLAS	46E	9,020	05 Series	05 Series
ATLAS	55	10,010	05 Series	05 Series
ATLAS	72E	10,560	05 Series	05 Series
ATLAS	52E	10,780	05 Series	05 Series
ATLAS	AR62C	11,000	05 Series	05 Series
ATLAS	65	11,156	05 Series	05 Series
ATLAS	62D	11,440	05 Series	05 Series
ATLAS	62E	11,440	05 Series	05 Series
ATLAS	72C	11,440	05 Series	05 Series
ATLAS	70	12,756	05 Series	05 Series
ATLAS	80	13,173	05 Series	05 Series
ATLAS	82E	14,702	05 Series	05 Series
ATLAS	86E	14,702	05 Series	05 Series
BENATI	5.08	14,080	05 Series	05 Series
BENATI	5.10	16,060	05 Series	10 Series
BENATI	9SB	16,280	05 Series	10 Series
BENATI	5.15B	18,480	05 Series	10 Series
BENATI	12SB	21,340	10 Series	15 Series
BENATI	5.20B	23,540	10 Series	15 Series

XS SYSTEMS SERIES RECOMMENDATION CHART FOR LOADERS

MANUFACTURER	MODEL	BREAKOUT FORCE IN LBS.	RECOMMENDED SERIES SIZE BASED ON	
			APPLICATION	
			STANDARD / HEAVY DUTY	EXTREME SERVICE
BENATI	16SB	25,960	15 Series	15 Series
BENATI	19SB	30,140	15 Series	20 Series
BENATI	5.25	31,460	15 Series	20 Series
BENATI	5.30	36,080	15 Series	20 Series
BENATI	22SB	38,060	20 Series	20 Series
BENATI	25SB	50,160	20 Series	25 Series
BENATI	35SB	64,240	25 Series	30 Series
BENATI	40SB	87,120	30 Series	50 Series
BENFRA	1.05	6,160	04 Series	04 Series
BENFRA	1.15	8,800	05 Series	05 Series
BENFRA	215B	11,000	05 Series	05 Series
BENFRA	315B	14,300	05 Series	05 Series
BENFRA	415B	17,600	05 Series	10 Series
BENFRA	515B	18,480	05 Series	10 Series
BRAY	RS4500C	11,660	05 Series	05 Series
BRAY	PS7500C	19,580	10 Series	10 Series
BRAY	PS10000B	22,880	10 Series	15 Series
BRAY	PS10500C	27,280	15 Series	15 Series
Buhler	B56	9,200	05 Series	05 Series
CASE	1825	1,760	04 Series	04 Series
CASE	1840	3,080	04 Series	04 Series
CASE	1845C	4,620	04 Series	04 Series
CASE	W4	5,060	04 Series	04 Series
CASE	21B	7,700	04 Series	05 Series
CASE	W11	10,815	05 Series	05 Series
CASE	121B	11,000	05 Series	05 Series
CASE	221B	11,000	05 Series	05 Series
CASE	21D	11,238	05 Series	05 Series
CASE	321B	12,980	05 Series	05 Series
CASE	W14	14,080	05 Series	05 Series
CASE	421B	15,180	05 Series	10 Series
CASE	321D	15,955	05 Series	10 Series
CASE	W15	16,720	05 Series	10 Series
CASE	521D	20,202	10 Series	10 Series
CASE	W24B	21,340	10 Series	15 Series
CASE	W18	22,440	10 Series	15 Series
CASE	W20	22,440	10 Series	15 Series
CASE	W20C	22,440	10 Series	15 Series

XS SYSTEMS SERIES RECOMMENDATION CHART FOR LOADERS

MANUFACTURER	MODEL	BREAKOUT FORCE IN LBS.	RECOMMENDED SERIES SIZE BASED ON	
			APPLICATION	
			STANDARD / HEAVY DUTY	EXTREME SERVICE
CASE	621	24,640	10 Series	15 Series
CASE	W30	25,960	15 Series	15 Series
CASE	621C	26,033	15 Series	15 Series
CASE	621D	26,055	15 Series	15 Series
CASE	721C	28,834	15 Series	15 Series
CASE	721	30,140	15 Series	20 Series
CASE	W36	30,140	15 Series	20 Series
CASE	821C	30,476	15 Series	20 Series
CASE	821	35,200	15 Series	20 Series
CASE	921C	45,398	20 Series	25 Series
CASE	921	45,980	20 Series	25 Series
CATERPILLAR	902	8,200	04 Series	05 Series
CATERPILLAR	906	10,200	05 Series	05 Series
CATERPILLAR	910.0	10,340	05 Series	05 Series
CATERPILLAR	908	13,050	05 Series	05 Series
CATERPILLAR	914G	13,136	05 Series	05 Series
CATERPILLAR	IT12F	14,520	05 Series	05 Series
CATERPILLAR	IT12B	15,180	05 Series	10 Series
CATERPILLAR	910F	16,060	05 Series	10 Series
CATERPILLAR	910E	16,500	05 Series	10 Series
CATERPILLAR	IT14F	16,720	05 Series	10 Series
CATERPILLAR	IT14B	16,940	05 Series	10 Series
CATERPILLAR	920.0	17,380	05 Series	10 Series
CATERPILLAR	930.0	18,700	05 Series	10 Series
CATERPILLAR	IT18F	20,460	10 Series	15 Series
CATERPILLAR	IT24F	20,460	10 Series	15 Series
CATERPILLAR	918F	21,560	10 Series	15 Series
CATERPILLAR	924Gz	21,727	10 Series	15 Series
CATERPILLAR	928F	21,780	10 Series	15 Series
CATERPILLAR	916.0	22,000	10 Series	15 Series
CATERPILLAR	924F	22,000	10 Series	15 Series
CATERPILLAR	950	22,660	10 Series	15 Series
CATERPILLAR	926.0	24,200	10 Series	15 Series
CATERPILLAR	926E	24,200	10 Series	15 Series
CATERPILLAR	938G Series II	24,594	10 Series	15 Series
CATERPILLAR	IT18B	24,860	10 Series	15 Series
CATERPILLAR	IT28B	25,080	10 Series	15 Series
CATERPILLAR	924G	25,195	10 Series	15 Series

XS SYSTEMS SERIES RECOMMENDATION CHART FOR LOADERS

MANUFACTURER	MODEL	BREAKOUT FORCE IN LBS.	RECOMMENDED SERIES SIZE BASED ON	
			APPLICATION	
			STANDARD / HEAVY DUTY	EXTREME SERVICE
CATERPILLAR	IT28G	25,340	15 Series	15 Series
CATERPILLAR	938G High Lift	25,830	15 Series	15 Series
CATERPILLAR	928G	25,849	15 Series	15 Series
CATERPILLAR	IT38G Series II	26,730	15 Series	15 Series
CATERPILLAR	938G	27,060	15 Series	15 Series
CATERPILLAR	966D	27,940	15 Series	15 Series
CATERPILLAR	966C	28,600	15 Series	15 Series
CATERPILLAR	960F	29,260	15 Series	15 Series
CATERPILLAR	936F	29,920	15 Series	20 Series
CATERPILLAR	936E	30,140	15 Series	20 Series
CATERPILLAR	936	30,580	15 Series	20 Series
CATERPILLAR	962G Series II	31,024	15 Series	20 Series
CATERPILLAR	962G	32,980	15 Series	20 Series
CATERPILLAR	IT62G II	33,497	15 Series	20 Series
CATERPILLAR	970F	34,540	15 Series	20 Series
CATERPILLAR	950G	34,640	15 Series	20 Series
CATERPILLAR	950G Series II	34,666	15 Series	20 Series
CATERPILLAR	950E	35,200	15 Series	20 Series
CATERPILLAR	980B	35,640	15 Series	20 Series
CATERPILLAR	980G Waste Handler	36,095	15 Series	20 Series
CATERPILLAR	950B	36,740	15 Series	20 Series
CATERPILLAR	950F	37,400	20 Series	20 Series
CATERPILLAR	966G	44,120	20 Series	25 Series
CATERPILLAR	966G Series II	45,184	20 Series	25 Series
CATERPILLAR	980G Series II	47,277	20 Series	25 Series
CATERPILLAR	966E	48,180	20 Series	25 Series
CATERPILLAR	972G Series II	48,554	20 Series	25 Series
CATERPILLAR	980G	49,255	20 Series	25 Series
CATERPILLAR	972G	51,210	20 Series	25 Series
CATERPILLAR	966F	52,360	20 Series	25 Series
CATERPILLAR	980G-II	52,391	20 Series	25 Series
CATERPILLAR	980F	55,660	25 Series	25 Series
CATERPILLAR	980G-II High Lift	56,386	25 Series	25 Series
CATERPILLAR	980C	58,300	25 Series	30 Series
CATERPILLAR	988F	80,520	30 Series	40 Series
CATERPILLAR	992B	80,740	30 Series	40 Series
CATERPILLAR	988B	103,400	40 Series	50 Series
CATERPILLAR	988G	103,500	40 Series	50 Series

XS SYSTEMS SERIES RECOMMENDATION CHART FOR LOADERS

MANUFACTURER	MODEL	BREAKOUT FORCE IN LBS.	RECOMMENDED SERIES SIZE BASED ON	
			APPLICATION	
			STANDARD / HEAVY DUTY	EXTREME SERVICE
CATERPILLAR	990 Series II High Lift	120,498	50 Series	70 Series
CATERPILLAR	990	128,920	50 Series	85 Series
CATERPILLAR	990 Series II	131,194	70 Series	85 Series
CATERPILLAR	990-II High Lift	138,773	70 Series	85 Series
CATERPILLAR	990-II	138,883	70 Series	85 Series
CATERPILLAR	992G High Lift	141,600	70 Series	85 Series
CATERPILLAR	992D	144,760	70 Series	85 Series
CATERPILLAR	992G	146,549	70 Series	85 Series
CATERPILLAR	992C	148,720	70 Series	85 Series
CATERPILLAR	994D High Lift	197,208	85 Series	115 Series
CATERPILLAR	994	209,440	115 Series	145 Series
CATERPILLAR	994D	213,750	115 Series	145 Series
CLARK	35B	11,000	05 Series	05 Series
CLARK	45C	14,740	05 Series	05 Series
CLARK	55B	18,040	05 Series	10 Series
CLARK	55C	18,040	05 Series	10 Series
CLARK	75B	18,700	05 Series	10 Series
CLARK	75C	26,840	15 Series	15 Series
CLARK	125B	29,920	15 Series	20 Series
CLARK	175B	36,740	15 Series	20 Series
CLARK	125C	40,480	20 Series	20 Series
CLARK	175C	40,920	20 Series	20 Series
CLARK	275B	51,700	20 Series	25 Series
CLARK	275C	55,000	20 Series	25 Series
CLARK	475B	102,740	40 Series	50 Series
CLARK	475C	104,500	40 Series	70 Series
CLARK	320	107,800	40 Series	70 Series
COYOTE	C18	1,170	04 Series	04 Series
COYOTE	C170	3,300	04 Series	04 Series
COYOTE	C285	3,750	04 Series	04 Series
COYOTE	C265	3,754	04 Series	04 Series
COYOTE	C5	5,450	04 Series	04 Series
COYOTE	C7	6,613	04 Series	04 Series
COYOTE	C8c	7,190	04 Series	05 Series
COYOTE	C9	9,325	05 Series	05 Series
COYOTE	C15	10,050	05 Series	05 Series
COYOTE	C14C	10,100	05 Series	05 Series
COYOTE	C10B	10,207	05 Series	05 Series

XS SYSTEMS SERIES RECOMMENDATION CHART FOR LOADERS

MANUFACTURER	MODEL	BREAKOUT FORCE IN LBS.	RECOMMENDED SERIES SIZE BASED ON	
			APPLICATION	
			STANDARD / HEAVY DUTY	EXTREME SERVICE
COYOTE	C18B	11,450	05 Series	05 Series
COYOTE	C19	11,465	05 Series	05 Series
COYOTE	C20	13,450	05 Series	05 Series
COYOTE	C22	15,000	05 Series	05 Series
DAEWOO	Mega 160	17,250	05 Series	10 Series
DAEWOO	160-III	17,290	05 Series	10 Series
DAEWOO	200-III	23,100	10 Series	15 Series
DAEWOO	Mega 200-V	23,150	10 Series	15 Series
DAEWOO	Mega 250-V	29,100	15 Series	15 Series
DAEWOO	250-III	29,106	15 Series	15 Series
DAEWOO	300-III	36,900	20 Series	20 Series
DAEWOO	Mega 300-V	40,790	20 Series	20 Series
DAEWOO	MEGA 400	45,980	20 Series	25 Series
DAEWOO	400-III Plus	48,180	20 Series	25 Series
DAEWOO	Mega 400-V	48,510	20 Series	25 Series
DAEWOO	Mega 500-V	59,525	25 Series	30 Series
DART	600E	111,320	50 Series	70 Series
DART	600EC	111,320	50 Series	70 Series
DRESSER	510B	15,400	05 Series	10 Series
DRESSER	510C	15,400	05 Series	10 Series
DRESSER	515B	17,160	05 Series	10 Series
DRESSER	515C	23,540	10 Series	15 Series
DRESSER	520B	23,980	10 Series	15 Series
DRESSER	520C	23,980	10 Series	15 Series
DRESSER	530C	27,500	15 Series	15 Series
DRESSER	530A II	30,140	15 Series	20 Series
DRESSER	530	30,800	15 Series	20 Series
DRESSER	540A II	33,000	15 Series	20 Series
DRESSER	540C	33,000	15 Series	20 Series
DRESSER	540	33,660	15 Series	20 Series
DRESSER	538	38,280	20 Series	20 Series
DRESSER	545	39,160	20 Series	20 Series
DRESSER	550	39,600	20 Series	20 Series
DRESSER	555	55,220	25 Series	25 Series
DRESSER	560B	71,500	25 Series	40 Series
DRESSER	570	98,560	40 Series	50 Series
DRESSER	580	191,400	85 Series	115 Series
DRESSER	4000	215,600	115 Series	145 Series

XS SYSTEMS SERIES RECOMMENDATION CHART FOR LOADERS

MANUFACTURER	MODEL	BREAKOUT FORCE IN LBS.	RECOMMENDED SERIES SIZE BASED ON	
			APPLICATION	
			STANDARD / HEAVY DUTY	EXTREME SERVICE
DRESSTA	510C	16,263	05 Series	10 Series
DRESSTA	515E	20,027	10 Series	10 Series
DRESSTA	515EH	21,615	10 Series	15 Series
DRESSTA	515CH	23,536	10 Series	15 Series
DRESSTA	515EH High Lift	24,850	10 Series	15 Series
DRESSTA	520EH High Lift	26,980	15 Series	15 Series
DRESSTA	520E	29,671	15 Series	20 Series
DRESSTA	520CH	29,983	15 Series	20 Series
DRESSTA	520EH	29,983	15 Series	20 Series
DRESSTA	530E	39,632	20 Series	20 Series
DRESSTA	555B	60,010	25 Series	30 Series
DRESSTA	555B High Lift	63,090	25 Series	30 Series
DRESSTA	560C	66,230	25 Series	30 Series
DRESSTA	560C High Lift	69,580	25 Series	30 Series
FAI	320B	2,420	04 Series	04 Series
FAI	330B	2,420	04 Series	04 Series
FAI	333	2,640	04 Series	04 Series
FAI	338	3,520	04 Series	04 Series
FAI	380	5,500	04 Series	04 Series
FAI	555	11,440	05 Series	05 Series
FAI	556	11,440	05 Series	05 Series
FAI	585	13,640	05 Series	05 Series
FAI	575	14,960	05 Series	05 Series
FAI	590 Turbo	14,960	05 Series	05 Series
FAI	595 Turbo	15,620	05 Series	10 Series
FAUN	F1110C	18,040	05 Series	10 Series
FAUN	F1110	19,140	10 Series	10 Series
FAUN	F1310	23,760	10 Series	15 Series
FAUN	F1400C	25,300	15 Series	15 Series
FAUN	F1410	26,840	15 Series	15 Series
FAUN	F2010	32,120	15 Series	20 Series
FAUN	F2000C	33,000	15 Series	20 Series
FAUN	F1810	35,200	15 Series	20 Series
FAUN	F3500	48,620	20 Series	25 Series
FAUN	F3510	57,860	25 Series	30 Series
FAUN	F5000	60,280	25 Series	30 Series
FDI	D1000S	7,920	04 Series	05 Series
Fiatallis	FR120.2	21,693	10 Series	15 Series

XS SYSTEMS SERIES RECOMMENDATION CHART FOR LOADERS

MANUFACTURER	MODEL	BREAKOUT FORCE IN LBS.	RECOMMENDED SERIES SIZE BASED ON	
			APPLICATION	
			STANDARD / HEAVY DUTY	EXTREME SERVICE
Fiatallis	FR140.2	27,606	15 Series	15 Series
Fiatallis	FR180.2	34,729	15 Series	20 Series
FIAT-HITACHI	FR7B	14,740	05 Series	05 Series
FIAT-HITACHI	FR7C	14,960	05 Series	05 Series
FIAT-HITACHI	345B	17,380	05 Series	10 Series
FIAT-HITACHI	FR9	17,600	05 Series	10 Series
FIAT-HITACHI	FR90	18,040	05 Series	10 Series
FIAT-HITACHI	FR9C	18,700	05 Series	10 Series
FIAT-HITACHI	FR90PL	19,580	10 Series	10 Series
FIAT-HITACHI	FR9B	19,580	10 Series	10 Series
FIAT-HITACHI	FR9B PL	19,800	10 Series	10 Series
FIAT-HITACHI	FR11	21,120	10 Series	15 Series
FIAT-HITACHI	FR10B	23,320	10 Series	15 Series
FIAT-HITACHI	FR12	23,540	10 Series	15 Series
FIAT-HITACHI	FR10C	23,760	10 Series	15 Series
FIAT-HITACHI	FR130.2	24,860	10 Series	15 Series
FIAT-HITACHI	FR12B Turbo	26,180	15 Series	15 Series
FIAT-HITACHI	FR10E	26,400	15 Series	15 Series
FIAT-HITACHI	FR130	26,840	15 Series	15 Series
FIAT-HITACHI	FR15	29,260	15 Series	15 Series
FIAT-HITACHI	FR15B	32,120	15 Series	20 Series
FIAT-HITACHI	FR160.2	34,540	15 Series	20 Series
FIAT-HITACHI	FR160	38,060	20 Series	20 Series
FIAT-HITACHI	FR20	44,000	20 Series	20 Series
FIAT-HITACHI	FR20B	44,000	20 Series	20 Series
FIAT-HITACHI	FR30	44,000	20 Series	20 Series
FIAT-HITACHI	945B	45,100	20 Series	25 Series
FIAT-HITACHI	FR220.2	47,520	20 Series	25 Series
FIAT-HITACHI	FR220	49,500	20 Series	25 Series
FIAT-HITACHI	FR35	60,060	25 Series	30 Series
FORD	555D	11,660	05 Series	05 Series
FORD	655D	11,660	05 Series	05 Series
FURUKAWA	FL70A	2,860	04 Series	04 Series
FURUKAWA	FL35	5,280	04 Series	04 Series
FURUKAWA	FL302-2	5,620	04 Series	04 Series
FURUKAWA	FL304A-2	6,720	04 Series	04 Series
FURUKAWA	FL50	7,260	04 Series	05 Series
FURUKAWA	FL303-2	7,270	04 Series	05 Series

XS SYSTEMS SERIES RECOMMENDATION CHART FOR LOADERS

MANUFACTURER	MODEL	BREAKOUT FORCE IN LBS.	RECOMMENDED SERIES SIZE BASED ON	
			APPLICATION	
			STANDARD / HEAVY DUTY	EXTREME SERVICE
FURUKAWA	FL90-1	9,020	05 Series	05 Series
FURUKAWA	FL305-1	9,150	05 Series	05 Series
FURUKAWA	FL90	9,240	05 Series	05 Series
FURUKAWA	305	10,120	05 Series	05 Series
FURUKAWA	FL120A	12,760	05 Series	05 Series
FURUKAWA	310	15,180	05 Series	10 Series
FURUKAWA	FL150	18,040	05 Series	10 Series
FURUKAWA	FL170A	20,020	10 Series	10 Series
FURUKAWA	315	21,120	10 Series	15 Series
FURUKAWA	FL150-1	21,120	10 Series	15 Series
FURUKAWA	FL200-1	26,400	15 Series	15 Series
FURUKAWA	FL230	27,720	15 Series	15 Series
FURUKAWA	FL230-1	27,720	15 Series	15 Series
FURUKAWA	335	29,040	15 Series	15 Series
FURUKAWA	345	33,440	15 Series	20 Series
FURUKAWA	FL270-1	35,860	15 Series	20 Series
FURUKAWA	FL330-I	36,740	15 Series	20 Series
FURUKAWA	FL320A	37,400	20 Series	20 Series
FURUKAWA	FL330	41,360	20 Series	20 Series
FURUKAWA	355	42,460	20 Series	20 Series
FURUKAWA	365	46,200	20 Series	25 Series
FURUKAWA	FL460	56,320	25 Series	25 Series
GEHL	KL415	7,920	04 Series	05 Series
GEHL	KL608	10,780	05 Series	05 Series
Gehl Avantage	AL-20DX	1,079	04 Series	04 Series
HANOMAG	5C	5,720	04 Series	04 Series
HANOMAG	6D	5,720	04 Series	04 Series
HANOMAG	10E	5,940	04 Series	04 Series
HANOMAG	10F	7,260	04 Series	05 Series
HANOMAG	15F	9,900	05 Series	05 Series
HANOMAG	22C	11,660	05 Series	05 Series
HANOMAG	20E	12,980	05 Series	05 Series
HANOMAG	22D	14,300	05 Series	05 Series
HANOMAG	20F	15,400	05 Series	10 Series
HANOMAG	33C	15,840	05 Series	10 Series
HANOMAG	33D	16,060	05 Series	10 Series
HANOMAG	33C1	16,280	05 Series	10 Series
HANOMAG	35D	20,900	10 Series	15 Series

XS SYSTEMS SERIES RECOMMENDATION CHART FOR LOADERS

MANUFACTURER	MODEL	BREAKOUT FORCE IN LBS.	RECOMMENDED SERIES SIZE BASED ON	
			APPLICATION	
			STANDARD / HEAVY DUTY	EXTREME SERVICE
HANOMAG	44D Turbo	22,880	10 Series	15 Series
HANOMAG	55C	25,300	15 Series	15 Series
HANOMAG	55D	26,620	15 Series	15 Series
HANOMAG	50E	31,460	15 Series	20 Series
HANOMAG	60E Turbo	36,080	15 Series	20 Series
HANOMAG	60E	37,400	20 Series	20 Series
HANOMAG	66C	37,840	20 Series	20 Series
HANOMAG	66D Turbo	41,800	20 Series	20 Series
HANOMAG	77C Turbo	43,780	20 Series	20 Series
HANOMAG	77D Turbo	43,780	20 Series	20 Series
HANOMAG	70E	57,860	25 Series	30 Series
HANOMAG	80E	66,000	25 Series	30 Series
HYUNDAI	HL720-3	16,420	05 Series	10 Series
HYUNDAI	HL730-3	19,620	10 Series	10 Series
HYUNDAI	HL730-3 w/Cummins	19,620	10 Series	10 Series
HYUNDAI	HL740-3	23,200	10 Series	15 Series
HYUNDAI	HL17	23,320	10 Series	15 Series
HYUNDAI	HL750	30,270	15 Series	20 Series
HYUNDAI	HL25	38,720	20 Series	20 Series
HYUNDAI	HL760	40,630	20 Series	20 Series
HYUNDAI	HL35	47,520	20 Series	25 Series
HYUNDAI	HL770	50,200	20 Series	25 Series
HYUNDAI	HL-780-3	58,130	25 Series	30 Series
JCB	406	8,140	04 Series	05 Series
JCB	407	8,140	04 Series	05 Series
JCB	412FM+	9,020	05 Series	05 Series
JCB	409	9,240	05 Series	05 Series
JCB	408	9,460	05 Series	05 Series
JCB	407B ZX	9,923	05 Series	05 Series
JCB	409B ZX	10,838	05 Series	05 Series
JCB	410	13,640	05 Series	05 Series
JCB	410E	13,640	05 Series	05 Series
JCB	412E Turbo	13,860	05 Series	05 Series
JCB	411	16,060	05 Series	10 Series
JCB	420	17,160	05 Series	10 Series
JCB	413	17,820	05 Series	10 Series
JCB	426HT	17,820	05 Series	10 Series
JCB	415	18,920	05 Series	10 Series

XS SYSTEMS SERIES RECOMMENDATION CHART FOR LOADERS

MANUFACTURER	MODEL	BREAKOUT FORCE IN LBS.	RECOMMENDED SERIES SIZE BASED ON	
			APPLICATION	
			STANDARD / HEAVY DUTY	EXTREME SERVICE
JCB	415E	19,140	10 Series	10 Series
JCB	907 / 1750	19,580	10 Series	10 Series
JCB	3000	20,020	10 Series	10 Series
JCB	418	21,560	10 Series	15 Series
JCB	416	22,000	10 Series	15 Series
JCB	425	22,220	10 Series	15 Series
JCB	416 HT	22,570	10 Series	15 Series
JCB	416 HT Super High Lift	22,794	10 Series	15 Series
JCB	423	25,300	15 Series	15 Series
JCB	430	25,300	15 Series	15 Series
JCB	435	26,400	15 Series	15 Series
JCB	436HT	29,920	15 Series	20 Series
JCB	428	30,140	15 Series	20 Series
JCB	436 HT Super Lift	32,925	15 Series	20 Series
JCB	426B ZX	33,630	15 Series	20 Series
JCB	456 ZX	36,193	15 Series	20 Series
JCB	436B ZX	36,418	15 Series	20 Series
JCB	436 ZX	39,565	20 Series	20 Series
JCB	456B ZX	41,125	20 Series	20 Series
JOHN DEERE	JD84	8,800	05 Series	05 Series
JOHN DEERE	304H	10,119	05 Series	05 Series
JOHN DEERE	244H	10,143	05 Series	05 Series
JOHN DEERE	304H Waste Handler	10,410	05 Series	05 Series
JOHN DEERE	JD344E	14,300	05 Series	05 Series
JOHN DEERE	JD544A	16,060	05 Series	10 Series
JOHN DEERE	324H	16,629	05 Series	10 Series
JOHN DEERE	344H	16,629	05 Series	10 Series
JOHN DEERE	JD444C	16,940	05 Series	10 Series
JOHN DEERE	444H	16,952	05 Series	10 Series
JOHN DEERE	JD544B	19,360	10 Series	10 Series
JOHN DEERE	JD544D	20,020	10 Series	10 Series
JOHN DEERE	JD544C	20,460	10 Series	15 Series
JOHN DEERE	JD544E	22,000	10 Series	15 Series
JOHN DEERE	544H	22,487	10 Series	15 Series
JOHN DEERE	JD544G	23,540	10 Series	15 Series
JOHN DEERE	JD644A	23,760	10 Series	15 Series
JOHN DEERE	JD644D	23,980	10 Series	15 Series
JOHN DEERE	JD644B	24,200	10 Series	15 Series

XS SYSTEMS SERIES RECOMMENDATION CHART FOR LOADERS

MANUFACTURER	MODEL	BREAKOUT FORCE IN LBS.	RECOMMENDED SERIES SIZE BASED ON	
			APPLICATION	
			STANDARD / HEAVY DUTY	EXTREME SERVICE
JOHN DEERE	JD644C	24,420	10 Series	15 Series
JOHN DEERE	644H Waste Handler	27,279	15 Series	15 Series
JOHN DEERE	624H	27,771	15 Series	15 Series
JOHN DEERE	JD624E	29,700	15 Series	20 Series
JOHN DEERE	JD844	34,320	15 Series	20 Series
JOHN DEERE	644H MH	34,340	15 Series	20 Series
JOHN DEERE	644H	34,432	15 Series	20 Series
JOHN DEERE	JD644E	35,860	15 Series	20 Series
JOHN DEERE	744H MH	37,175	20 Series	20 Series
JOHN DEERE	JD744	40,040	20 Series	20 Series
JOHN DEERE	744H	42,150	20 Series	20 Series
KAEBLE	SL14B	25,300	15 Series	15 Series
KAEBLE	SL18C	34,100	15 Series	20 Series
KAEBLE	SL18E	34,100	15 Series	20 Series
KAEBLE	SL20	34,100	15 Series	20 Series
KAEBLE	SL18F	34,760	15 Series	20 Series
KAEBLE	SL20B	39,160	20 Series	20 Series
KAEBLE	SL25B	39,820	20 Series	20 Series
KAEBLE	SL25C	55,660	25 Series	25 Series
KAEBLE	SL26	55,660	25 Series	25 Series
KAWASAKI	45ZII	9,680	05 Series	05 Series
KAWASAKI	50ZIV-2	13,700	05 Series	05 Series
KAWASAKI	50ZII	14,960	05 Series	05 Series
KAWASAKI	60ZIV-2	17,600	05 Series	10 Series
KAWASAKI	60ZII	18,260	05 Series	10 Series
KAWASAKI	65ZIV-2	21,400	10 Series	15 Series
KAWASAKI	65ZII	22,880	10 Series	15 Series
KAWASAKI	70ZIV-2	27,560	15 Series	15 Series
KAWASAKI	70Z IV	29,480	15 Series	20 Series
KAWASAKI	70ZII	30,140	15 Series	20 Series
KAWASAKI	80ZIV-2	34,390	15 Series	20 Series
KAWASAKI	80Z III	34,540	15 Series	20 Series
KAWASAKI	80ZII	35,200	15 Series	20 Series
KAWASAKI	85ZII	40,700	20 Series	20 Series
KAWASAKI	85ZIV-2	41,225	20 Series	20 Series
KAWASAKI	90ZIV-2	46,075	20 Series	25 Series
KAWASAKI	90ZII	47,300	20 Series	25 Series
KAWASAKI	95ZIV-2	54,670	20 Series	25 Series

XS SYSTEMS SERIES RECOMMENDATION CHART FOR LOADERS

MANUFACTURER	MODEL	BREAKOUT FORCE IN LBS.	RECOMMENDED SERIES SIZE BASED ON	
			APPLICATION	
			STANDARD / HEAVY DUTY	EXTREME SERVICE
KAWASAKI	95ZII	56,100	25 Series	25 Series
KAWASAKI	110ZII	69,520	25 Series	30 Series
KAWASAKI	115ZII	80,520	30 Series	40 Series
KAWASAKI	115ZIV-2	84,900	30 Series	40 Series
KAWASAKI	115ZIV-2 High Lift	90,400	40 Series	50 Series
KOBELCO	LK200	8,580	04 Series	05 Series
KOBELCO	LK80Z	9,680	05 Series	05 Series
KOBELCO	LK300A	12,100	05 Series	05 Series
KOBELCO	LK350 Mk II	14,740	05 Series	05 Series
KOBELCO	LK120Z	14,960	05 Series	05 Series
KOBELCO	LK150Z	18,260	05 Series	10 Series
KOBELCO	LK400	18,480	05 Series	10 Series
KOBELCO	LK500	20,460	10 Series	15 Series
KOBELCO	LK550 Mk II	22,440	10 Series	15 Series
KOBELCO	LK190Z	23,320	10 Series	15 Series
KOBELCO	LK700A	27,500	15 Series	15 Series
KOBELCO	LK600	28,600	15 Series	15 Series
KOBELCO	LK650 Mk II	29,480	15 Series	20 Series
KOBELCO	LK230Z	30,140	15 Series	20 Series
KOBELCO	LK270Z	35,200	15 Series	20 Series
KOBELCO	LK850-II	40,260	20 Series	20 Series
KOBELCO	LK310Z	40,700	20 Series	20 Series
KOBELCO	LK900	47,080	20 Series	25 Series
KOBELCO	LK350Z	47,300	20 Series	25 Series
KOBELCO	LK1500A	51,920	20 Series	25 Series
KOBELCO	LK470Z	56,100	25 Series	25 Series
KOBELCO	LK560Z	80,520	30 Series	40 Series
KOMATSU	WA20-1	4,400	04 Series	04 Series
KOMATSU	WA30-2	5,720	04 Series	04 Series
KOMATSU	WA30-5	5,950	04 Series	04 Series
KOMATSU	WA50-3	6,720	04 Series	04 Series
KOMATSU	WA60	7,260	04 Series	05 Series
KOMATSU	WA40-1	7,920	04 Series	05 Series
KOMATSU	WA65-3	8,955	05 Series	05 Series
KOMATSU	WA75	9,020	05 Series	05 Series
KOMATSU	WA70-1	9,240	05 Series	05 Series
KOMATSU	WA75-3	10,935	05 Series	05 Series
KOMATSU	WA65	11,440	05 Series	05 Series

XS SYSTEMS SERIES RECOMMENDATION CHART FOR LOADERS

MANUFACTURER	MODEL	BREAKOUT FORCE IN LBS.	RECOMMENDED SERIES SIZE BASED ON	
			APPLICATION	
			STANDARD / HEAVY DUTY	EXTREME SERVICE
KOMATSU	WA90	15,400	05 Series	10 Series
KOMATSU	WA100-1	16,060	05 Series	10 Series
KOMATSU	WA180-3 APlus	16,160	05 Series	10 Series
KOMATSU	WA120-3 APlus	16,280	05 Series	10 Series
KOMATSU	WA95-3	16,313	05 Series	10 Series
KOMATSU	WA150-1	18,700	05 Series	10 Series
KOMATSU	WA180PT-3 A PLUS	20,234	10 Series	10 Series
KOMATSU	W70-3	21,560	10 Series	15 Series
KOMATSU	WA320-3 High Lift	21,777	10 Series	15 Series
KOMATSU	WA120-1	22,440	10 Series	15 Series
KOMATSU	WA200-1	22,660	10 Series	15 Series
KOMATSU	WA250-3 High Lift	22,706	10 Series	15 Series
KOMATSU	WA180-1	22,880	10 Series	15 Series
KOMATSU	WA200-5	23,038	10 Series	15 Series
KOMATSU	WA300-1	23,320	10 Series	15 Series
KOMATSU	WA250PT-5	24,581	10 Series	15 Series
KOMATSU	WA250-3 APlus	26,896	15 Series	15 Series
KOMATSU	WA320-2 APlus	27,560	15 Series	15 Series
KOMATSU	WA320-3 AVANCE PLUS	27,560	15 Series	15 Series
KOMATSU	WA300-3 Custom	27,563	15 Series	15 Series
KOMATSU	W90-3	27,940	15 Series	15 Series
KOMATSU	WA320-5	29,057	15 Series	15 Series
KOMATSU	WA250-5	30,534	15 Series	20 Series
KOMATSU	WA250-1	31,020	15 Series	20 Series
KOMATSU	WA320-1	32,120	15 Series	20 Series
KOMATSU	WA380-5	33,245	15 Series	20 Series
KOMATSU	WA400-5	33,290	15 Series	20 Series
KOMATSU	WA380-3 APlus	33,296	15 Series	20 Series
KOMATSU	WA390-1	33,440	15 Series	20 Series
KOMATSU	W120-3	34,540	15 Series	20 Series
KOMATSU	WA380-3 High Lift	36,009	15 Series	20 Series
KOMATSU	WA380-3	36,520	15 Series	20 Series
KOMATSU	WA450-3 MH APlus	36,934	20 Series	20 Series
KOMATSU	WA350-1	38,720	20 Series	20 Series
KOMATSU	WA380-1	38,720	20 Series	20 Series
KOMATSU	WA420-2 APlus	40,793	20 Series	20 Series
KOMATSU	WA420-3 High Lift	41,120	20 Series	20 Series
KOMATSU	WA400-1	42,900	20 Series	20 Series

XS SYSTEMS SERIES RECOMMENDATION CHART FOR LOADERS

MANUFACTURER	MODEL	BREAKOUT FORCE IN LBS.	RECOMMENDED SERIES SIZE BASED ON	
			APPLICATION	
			STANDARD / HEAVY DUTY	EXTREME SERVICE
KOMATSU	WA450-5	43,162	20 Series	20 Series
KOMATSU	WA450-3 APlus	43,218	20 Series	20 Series
KOMATSU	WA420-1	43,560	20 Series	20 Series
KOMATSU	WA470-1	44,660	20 Series	25 Series
KOMATSU	WA450-3 High Lift	45,308	20 Series	25 Series
KOMATSU	W170-2	47,080	20 Series	25 Series
KOMATSU	WA480-5	47,658	20 Series	25 Series
KOMATSU	WA450-1	48,620	20 Series	25 Series
KOMATSU	WA500-3 Avance Plus	52,259	20 Series	25 Series
KOMATSU	WA500-1	59,400	25 Series	30 Series
KOMATSU	WA500-3 High Lift	62,721	25 Series	30 Series
KOMATSU	W260-1	73,480	30 Series	40 Series
KOMATSU	WA600-3 Load & Carry	78,022	30 Series	40 Series
KOMATSU	WA600-3 AVANCE PLUS	83,010	30 Series	40 Series
KOMATSU	WA600-3	83,025	30 Series	40 Series
KOMATSU	WA600-3 High Lift	98,216	40 Series	50 Series
KOMATSU	WA600-1	99,880	40 Series	50 Series
KOMATSU	WA700-3	116,180	50 Series	70 Series
KOMATSU	WA700-3 With AJSS	116,180	50 Series	70 Series
KOMATSU	WA700-1	142,340	70 Series	85 Series
KOMATSU	WA900-3	149,690	70 Series	85 Series
KOMATSU	WA800-3	152,120	70 Series	85 Series
KOMATSU	WA900-3 High Lift	158,070	85 Series	85 Series
KOMATSU	WA800-3 High Lift	158,270	85 Series	85 Series
KOMATSU	WA800-2	179,520	85 Series	115 Series
KOMATSU	WA1200-3 High Lift	227,782	115 Series	145 Series
KOMATSU	WA1200-3	286,600	145 Series	145 Series
KRAMER	112SL	2,420	04 Series	04 Series
KRAMER	314T	4,180	04 Series	04 Series
KRAMER	212LT	4,400	04 Series	04 Series
KRAMER	212E	4,620	04 Series	04 Series
KRAMER	312L	5,940	04 Series	04 Series
KRAMER	312LE	5,940	04 Series	04 Series
KRAMER	312SL	5,940	04 Series	04 Series
KRAMER	312E	6,380	04 Series	04 Series
KRAMER	312LT	6,380	04 Series	04 Series
KRAMER	312SE	6,380	04 Series	04 Series
KRAMER	412E	7,040	04 Series	05 Series

XS SYSTEMS SERIES RECOMMENDATION CHART FOR LOADERS

MANUFACTURER	MODEL	BREAKOUT FORCE IN LBS.	RECOMMENDED SERIES SIZE BASED ON	
			APPLICATION	
			STANDARD / HEAVY DUTY	EXTREME SERVICE
KRAMER	512SE	7,480	04 Series	05 Series
KRAMER	512SL	7,700	04 Series	05 Series
KRAMER	612	11,220	05 Series	05 Series
KRAMER	612SL	11,220	05 Series	05 Series
KramerAllrad	120	2,406	04 Series	04 Series
KramerAllrad	118 Series 2	2,406	04 Series	04 Series
KramerAllrad	318 Series 2	6,520	04 Series	04 Series
KramerAllrad	420 series 2	7,801	04 Series	05 Series
KramerAllrad	421	8,183	04 Series	05 Series
KramerAllrad	320 Series 2	8,323	04 Series	05 Series
KramerAllrad	521	8,722	04 Series	05 Series
KramerAllrad	418 Series 2	8,992	05 Series	05 Series
KramerAllrad	520	9,689	05 Series	05 Series
KramerAllrad	520 Series 2	9,689	05 Series	05 Series
KramerAllrad	620 series 2	10,319	05 Series	05 Series
KramerAllrad	720	11,555	05 Series	05 Series
KramerAllrad	720 Series 2	11,555	05 Series	05 Series
KUBOTA	R310	3,520	04 Series	04 Series
KUBOTA	R410	5,940	04 Series	04 Series
KUBOTA	R420	6,550	04 Series	04 Series
KUBOTA	R510	7,260	04 Series	05 Series
KUBOTA	R520	7,425	04 Series	05 Series
LETOURNEAU	L800	115,720	50 Series	70 Series
LETOURNEAU	L-1000	150,000	70 Series	85 Series
LETOURNEAU	L-1000 HIGH LIFT	155,000	70 Series	85 Series
LETOURNEAU	L1200	160,600	85 Series	115 Series
LETOURNEAU	L-1100 HIGH LIFT	180,000	85 Series	115 Series
LETOURNEAU	L-1100	185,000	85 Series	115 Series
LETOURNEAU	L-1350 HIGH LIFT	217,930	115 Series	145 Series
LETOURNEAU	L-1350	220,000	115 Series	145 Series
LETOURNEAU	L-1800	263,000	145 Series	145 Series
LETOURNEAU	L-1800 HIGH LIFT	266,000	145 Series	145 Series
LETOURNEAU	L-1850	276,181	145 Series	145 Series
LETOURNEAU	L-1850 HIGH LIFT	280,672	145 Series	145 Series
LETOURNEAU	L-1400	282,000	145 Series	145 Series
LETOURNEAU	L-1400 HIGH LIFT	285,000	145 Series	145 Series
LETOURNEAU	L-2350	289,000	145 Series	145 Series
LIEBHERR	L504	4,840	04 Series	04 Series

XS SYSTEMS SERIES RECOMMENDATION CHART FOR LOADERS

MANUFACTURER	MODEL	BREAKOUT FORCE IN LBS.	RECOMMENDED SERIES SIZE BASED ON	
			APPLICATION	
			STANDARD / HEAVY DUTY	EXTREME SERVICE
LIEBHERR	L507	9,240	05 Series	05 Series
LIEBHERR	L506	9,680	05 Series	05 Series
LIEBHERR	L508	10,780	05 Series	05 Series
LIEBHERR	L510	17,160	05 Series	10 Series
LIEBHERR	L511	19,360	10 Series	10 Series
LIEBHERR	L512	21,120	10 Series	15 Series
LIEBHERR	L521	22,000	10 Series	15 Series
LIEBHERR	L522	22,880	10 Series	15 Series
LIEBHERR	L531	25,740	15 Series	15 Series
LIEBHERR	L541	29,480	15 Series	20 Series
LIEBHERR	L551	40,260	20 Series	20 Series
Link-Belt	L120D	19,108	10 Series	10 Series
Link-Belt	L125	22,031	10 Series	15 Series
Link-Belt	L130	27,876	15 Series	15 Series
MASSEY FERG.	MF613	11,000	05 Series	05 Series
MASSEY FERG.	MF615	13,200	05 Series	05 Series
MATBRO	LS200	10,120	05 Series	05 Series
MATBRO	LS300	17,600	05 Series	10 Series
MATBRO	LS500	26,840	15 Series	15 Series
MITSUBISHI	WS400	5,500	04 Series	04 Series
MITSUBISHI	WS500	7,040	04 Series	05 Series
New Holland	LW50	10,575	05 Series	05 Series
New Holland	LW50.B	12,050	05 Series	05 Series
New Holland	LW70.B	12,248	05 Series	05 Series
New Holland	LW60.B	12,278	05 Series	05 Series
New Holland	LW80	15,030	05 Series	10 Series
New Holland	LW90	15,148	05 Series	10 Series
New Holland	LW80.B	15,921	05 Series	10 Series
New Holland	LW110	17,640	05 Series	10 Series
New Holland	LW130	20,437	10 Series	15 Series
New Holland	LW170	29,542	15 Series	20 Series
New Holland	LW190.B	31,967	15 Series	20 Series
New Holland	LW190	35,935	15 Series	20 Series
New Holland	LW230.B	39,352	20 Series	20 Series
New Holland	LW230	39,463	20 Series	20 Series
New Holland	LW270	41,447	20 Series	20 Series
New Holland	LW270.B	50,045	20 Series	25 Series
O&K	L4	10,120	05 Series	05 Series

XS SYSTEMS SERIES RECOMMENDATION CHART FOR LOADERS

MANUFACTURER	MODEL	BREAKOUT FORCE IN LBS.	RECOMMENDED SERIES SIZE BASED ON	
			APPLICATION	
			STANDARD / HEAVY DUTY	EXTREME SERVICE
O&K	L6	10,560	05 Series	05 Series
O&K	L7	10,780	05 Series	05 Series
O&K	L9	10,780	05 Series	05 Series
O&K	L8	11,000	05 Series	05 Series
O&K	L5	12,100	05 Series	05 Series
O&K	L6F	12,100	05 Series	05 Series
O&K	L10	14,080	05 Series	05 Series
O&K	L12	17,600	05 Series	10 Series
O&K	L15	20,900	10 Series	15 Series
O&K	L15i	22,660	10 Series	15 Series
O&K	L20	23,980	10 Series	15 Series
O&K	L20i	26,840	15 Series	15 Series
O&K	L25	29,260	15 Series	15 Series
O&K	L35	32,780	15 Series	20 Series
O&K	L30	36,740	15 Series	20 Series
O&K	L45	39,820	20 Series	20 Series
O&K	L55	49,720	20 Series	25 Series
PEL-JOB	EL451	1,980	04 Series	04 Series
PEL-JOB	EL751	3,520	04 Series	04 Series
PEL-JOB	EL851	7,480	04 Series	05 Series
ROSSI	650HDS	14,740	05 Series	05 Series
ROSSI	500HDS	16,720	05 Series	10 Series
ROSSI	950HDS	18,920	05 Series	10 Series
ROSSI	1600HDS	29,260	15 Series	15 Series
ROSSI	1800HDS	36,080	15 Series	20 Series
ROSSI	2200HDS	40,480	20 Series	20 Series
ROSSI	2800HDS	46,640	20 Series	25 Series
ROSSI	4800HDS	65,120	25 Series	30 Series
SAMSUNG	SL150	29,700	15 Series	20 Series
SAMSUNG	SL180	36,080	15 Series	20 Series
SAMSUNG	SL200	41,800	20 Series	20 Series
SAMSUNG	SL250	43,780	20 Series	20 Series
Scat Trak	3200	6,107	04 Series	04 Series
Scat Trak	3210	6,107	04 Series	04 Series
SCHAEFF	SKL808	4,400	04 Series	04 Series
SCHAEFF	SKL809	4,840	04 Series	04 Series
SCHAEFF	SKL809 S	4,840	04 Series	04 Series
SCHAEFF	SKL809 S9	4,840	04 Series	04 Series

XS SYSTEMS SERIES RECOMMENDATION CHART FOR LOADERS

MANUFACTURER	MODEL	BREAKOUT FORCE IN LBS.	RECOMMENDED SERIES SIZE BASED ON	
			APPLICATION	
			STANDARD / HEAVY DUTY	EXTREME SERVICE
SCHAEFF	SKL810	4,840	04 Series	04 Series
SCHAEFF	SKL820	5,500	04 Series	04 Series
SCHAEFF	SKL811 A	5,720	04 Series	04 Series
SCHAEFF	SKL820 A	6,160	04 Series	04 Series
SCHAEFF	SKL821	7,260	04 Series	05 Series
SCHAEFF	SKL821 A	7,480	04 Series	05 Series
SCHAEFF	SKL830	7,480	04 Series	05 Series
SCHAEFF	SKL 823	7,630	04 Series	05 Series
SCHAEFF	SKL830 A	8,140	04 Series	05 Series
SCHAEFF	SKL840	8,580	04 Series	05 Series
SCHAEFF	SKL831	8,800	05 Series	05 Series
SCHAEFF	SKL831 A	8,800	05 Series	05 Series
SCHAEFF	SKL832 A	8,800	05 Series	05 Series
SCHAEFF	SKS631	8,800	05 Series	05 Series
SCHAEFF	SCL-515	8,960	05 Series	05 Series
SCHAEFF	SKL 833	9,890	05 Series	05 Series
SCHAEFF	SKS 633	10,115	05 Series	05 Series
SCHAEFF	SKL840 A	10,120	05 Series	05 Series
SCHAEFF	SKL841	10,340	05 Series	05 Series
SCHAEFF	SKL841 A	10,340	05 Series	05 Series
SCHAEFF	SKL850	10,560	05 Series	05 Series
SCHAEFF	SKL851	11,880	05 Series	05 Series
SCHAEFF	SKL851 A	11,880	05 Series	05 Series
SCHAEFF	SKL 853	12,815	05 Series	05 Series
SCHAEFF	SKL861 A	13,200	05 Series	05 Series
SCHAEFF	SKL 863	15,050	05 Series	10 Series
SCHAEFF	SKL871	20,680	10 Series	15 Series
SCHAEFF	SKL 873	24,325	10 Series	15 Series
Swinger	2000	4,752	04 Series	04 Series
Swinger	3000	8,500	04 Series	05 Series
TCM	E804	5,940	04 Series	04 Series
TCM	E806	7,060	04 Series	05 Series
TCM	E820	10,360	05 Series	05 Series
TCM	E830	14,550	05 Series	05 Series
TCM	E835	18,740	05 Series	10 Series
TCM	E840	22,050	10 Series	15 Series
TEREX	72-31B	22,660	10 Series	15 Series
TEREX	80C	36,520	15 Series	20 Series

XS SYSTEMS SERIES RECOMMENDATION CHART FOR LOADERS

MANUFACTURER	MODEL	BREAKOUT FORCE IN LBS.	RECOMMENDED SERIES SIZE BASED ON	
			APPLICATION	
			STANDARD / HEAVY DUTY	EXTREME SERVICE
TEREX	72-51B	38,280	20 Series	20 Series
TEREX	72-61	42,240	20 Series	20 Series
TEREX	85B	57,420	25 Series	30 Series
TEREX	72-81	61,600	25 Series	30 Series
TEREX	72-71B	67,100	25 Series	30 Series
TEREX	90C	97,680	40 Series	50 Series
V.M.E.	L30	12,320	05 Series	05 Series
V.M.E.	4200	12,760	05 Series	05 Series
V.M.E.	4200B	15,620	05 Series	10 Series
V.M.E.	L50	16,720	05 Series	10 Series
V.M.E.	4300	17,820	05 Series	10 Series
V.M.E.	4300B	18,480	05 Series	10 Series
V.M.E.	4400	19,800	10 Series	10 Series
V.M.E.	4500	24,200	10 Series	15 Series
V.M.E.	L70	25,520	15 Series	15 Series
V.M.E.	L90B	27,060	15 Series	15 Series
V.M.E.	L90C	27,940	15 Series	15 Series
V.M.E.	L120B	34,320	15 Series	20 Series
V.M.E.	4600	34,760	15 Series	20 Series
V.M.E.	4600B	34,760	15 Series	20 Series
V.M.E.	L120C	35,420	15 Series	20 Series
V.M.E.	L160	40,040	20 Series	20 Series
V.M.E.	L150	44,000	20 Series	20 Series
V.M.E.	L180	46,420	20 Series	25 Series
V.M.E.	L190B	60,060	25 Series	30 Series
V.M.E.	L190	60,500	25 Series	30 Series
V.M.E.	L270B	79,860	30 Series	40 Series
V.M.E.	L320	110,000	50 Series	70 Series
V.M.E.	L330C	110,000	50 Series	70 Series
V.M.E.	L480	141,680	70 Series	85 Series
V.M.E.	L480 Turbo	141,680	70 Series	85 Series
V.M.E.	475CT Turbo	148,500	70 Series	85 Series
VENIERI	2.63	6,600	04 Series	04 Series
VENIERI	3.63	6,600	04 Series	04 Series
VENIERI	3.73B	6,600	04 Series	04 Series
VENIERI	4.63	7,040	04 Series	05 Series
VENIERI	4.73	7,040	04 Series	05 Series
VENIERI	1.63B	7,920	04 Series	05 Series

XS SYSTEMS SERIES RECOMMENDATION CHART FOR LOADERS

MANUFACTURER	MODEL	BREAKOUT FORCE IN LBS.	RECOMMENDED SERIES SIZE BASED ON	
			APPLICATION	
			STANDARD / HEAVY DUTY	EXTREME SERVICE
VENIERI	6.33	8,580	04 Series	05 Series
VENIERI	3.63B	9,460	05 Series	05 Series
VENIERI	6.53B	11,000	05 Series	05 Series
VENIERI	3.63D	11,220	05 Series	05 Series
VENIERI	4.63B	11,440	05 Series	05 Series
VENIERI	4.63C	13,420	05 Series	05 Series
VENIERI	6.63	13,860	05 Series	05 Series
VENIERI	8.63	13,860	05 Series	05 Series
VENIERI	7.73	17,160	05 Series	10 Series
VENIERI	14.63	24,860	10 Series	15 Series
VersaDyne	3K	8,000	04 Series	05 Series
VOLVO	ZL402C	7,419	04 Series	05 Series
VOLVO	L30B	10,116	05 Series	05 Series
VOLVO	L35B	10,791	05 Series	05 Series
VOLVO	L40B	12,589	05 Series	05 Series
VOLVO	L45B	13,938	05 Series	05 Series
VOLVO	L50D	15,695	05 Series	10 Series
VOLVO	L70D	19,530	10 Series	10 Series
VOLVO	L60E	20,997	10 Series	15 Series
VOLVO	L70E	23,940	10 Series	15 Series
VOLVO	L90D	24,459	10 Series	15 Series
VOLVO	L90E	26,606	15 Series	15 Series
VOLVO	L180E Long Boom	31,010	15 Series	20 Series
VOLVO	L120D	31,293	15 Series	20 Series
VOLVO	L150 Waste Handler	33,080	15 Series	20 Series
VOLVO	L120E	34,180	15 Series	20 Series
VOLVO	L110E	35,140	15 Series	20 Series
VOLVO	L180 Waste Handler	35,800	15 Series	20 Series
VOLVO	L150E	38,370	20 Series	20 Series
VOLVO	L150D	39,290	20 Series	20 Series
VOLVO	L120 Long Boom	40,730	20 Series	20 Series
VOLVO	L180D	47,655	20 Series	25 Series
VOLVO	L180E	48,910	20 Series	25 Series
VOLVO	L180E HIGH LIFT	48,910	20 Series	25 Series
VOLVO	L180 Long Boom	49,210	20 Series	25 Series
VOLVO	L220D	49,480	20 Series	25 Series
VOLVO	L220E Long Boom	50,110	20 Series	25 Series
VOLVO	L220E	53,774	20 Series	25 Series

XS SYSTEMS SERIES RECOMMENDATION CHART FOR LOADERS

MANUFACTURER	MODEL	BREAKOUT FORCE IN LBS.	RECOMMENDED SERIES SIZE BASED ON	
			APPLICATION	
			STANDARD / HEAVY DUTY	EXTREME SERVICE
VOLVO	L330E Long Boom	88,100	40 Series	50 Series
VOLVO	L330D	88,911	40 Series	50 Series
VOLVO	L330E	102,910	40 Series	50 Series
WALDON	4100	3,375	04 Series	04 Series
WALDON	5100	5,000	04 Series	04 Series
WALDON	4500B	5,950	04 Series	04 Series
WALDON	7000	9,000	05 Series	05 Series
WALDON	7500	10,097	05 Series	05 Series
WALDON	6000C	10,450	05 Series	05 Series
WALDON	8500C	13,800	05 Series	05 Series
XCMG	XWL30G	24,728	10 Series	15 Series
XCMG	XWL40G	31,472	15 Series	20 Series
YANMAR	V1	1,760	04 Series	04 Series
YANMAR	V3	4,840	04 Series	04 Series
YANMAR	V3-5	5,072	04 Series	04 Series
YANMAR	V4-5	5,510	04 Series	04 Series
YANMAR	V4	5,940	04 Series	04 Series
YANMAR	V4-5HL	6,170	04 Series	04 Series
ZEPPELIN	ZL4B	7,700	04 Series	05 Series
ZEPPELIN	ZL6B	8,800	05 Series	05 Series
ZEPPELIN	ZL8B	10,560	05 Series	05 Series
ZEPPELIN	ZL10B	12,100	05 Series	05 Series
ZEPPELIN	ZL12B	13,420	05 Series	05 Series
ZETTELMAYER	ZL401B	3,080	04 Series	04 Series
ZETTELMAYER	ZL302	3,520	04 Series	04 Series
ZETTELMAYER	ZL401	5,500	04 Series	04 Series
ZETTELMAYER	ZL402	7,480	04 Series	05 Series
ZETTELMAYER	ZL501	8,140	04 Series	05 Series
ZETTELMAYER	ZL601	8,580	04 Series	05 Series
ZETTELMAYER	ZL601B	9,020	05 Series	05 Series
ZETTELMAYER	ZL602	9,020	05 Series	05 Series
ZETTELMAYER	ZL702	9,020	05 Series	05 Series
ZETTELMAYER	ZL501B	9,240	05 Series	05 Series
ZETTELMAYER	ZL502	9,240	05 Series	05 Series
ZETTELMAYER	ZL801	13,200	05 Series	05 Series
ZETTELMAYER	ZL802	13,200	05 Series	05 Series
ZETTELMAYER	ZL1001	13,420	05 Series	05 Series
ZETTELMAYER	ZL1002i	13,420	05 Series	05 Series

XS SYSTEMS SERIES RECOMMENDATION CHART FOR LOADERS

MANUFACTURER	MODEL	BREAKOUT FORCE IN LBS.	RECOMMENDED SERIES SIZE BASED ON	
			APPLICATION	
			STANDARD / HEAVY DUTY	EXTREME SERVICE
ZETTELMEYER	ZL801B	13,420	05 Series	05 Series
ZETTELMEYER	ZL802i	13,860	05 Series	05 Series
ZETTELMEYER	ZL802Si	13,860	05 Series	05 Series
ZETTELMEYER	ZL1700	20,460	10 Series	15 Series
ZETTELMEYER	ZL1801	25,740	15 Series	15 Series
ZETTELMEYER	ZL2001	30,140	15 Series	20 Series
ZETTELMEYER	ZL2002	31,020	15 Series	20 Series
ZETTELMEYER	ZL4001	41,800	20 Series	20 Series
ZETTELMEYER	ZL4001B	46,200	20 Series	25 Series
ZETTELMEYER	ZL5001F	46,200	20 Series	25 Series
ZETTELMEYER	ZL3002	48,180	20 Series	25 Series
ZETTELMEYER	ZL4002	50,380	20 Series	25 Series



All manufacturers' names, numbers, symbols, and descriptions are used for reference purposes only. It is not implied that any part listed is the product of these manufacturers.

HENSLEY INDUSTRIES, INC.

2108 Joe Field Road
Dallas, Texas 75229
www.hensleyind.com
Phone 972-241-2321

CUSTOMER SERVICE

Phone 888-406-6262
Fax 888-241-3274

**Copyright © 2004 Hensley Industries, Inc.
This publication is protected under the copyright laws of the United States.
Unauthorized duplication or distribution is prohibited.**