

# VS

**SIMEX**  
HEAVY MADE EASY



[simex.it](http://simex.it)



# VS

# FRONT SCREENING BUCKET

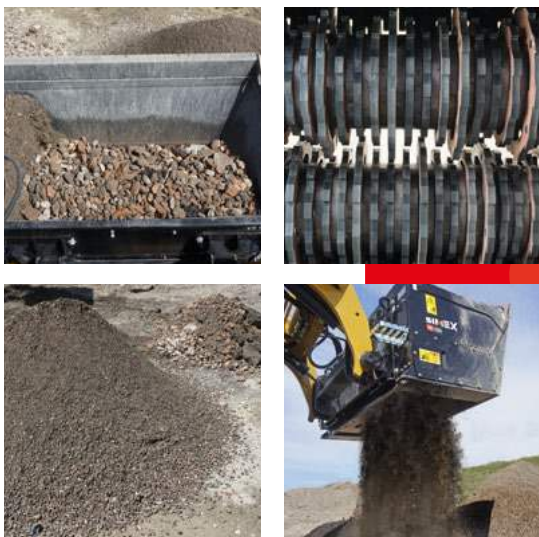
VS 1500



Designed for separating materials of different sizes directly on site, Simex VS screening bucket stands out for its easy loading, ease of use and high productivity.

Specific for the **selection of waste material** deriving from demolitions and excavations, it is also suitable for **mixing soils for the subsequent recovery** or reclamation.

Two rotating shafts on which the screening elements, of different sizes and shapes, are mounted, guarantee **an intense swirl of the material** to be screened.



## ADVANTAGES

- Easily replaceable screening elements
- Low maintenance costs
- Easy loading
- Safe coupling and decoupling
- Excellent visibility for the operator
- Lightweight frame

TECHNICAL DATA		VS 1500
Mouth width	mm inch	1510 60
Total width	mm inch	1550 61
Bucket capacity (SAE)	m <sup>3</sup> yd <sup>3</sup>	0.45 0.59
Screening area	m <sup>2</sup> yd <sup>2</sup>	0.5 0.59
Output size	mm inch	0 - 10* 0 - 0.39*
Number screening shafts	n°	2
Bucket weight empty (1)	kg lbs	790 1750
Required oil flow	l/min gpm	70 - 115 18.5 - 30.3
Max. required oil pressure	BAR psi	250 3600

## FIT

### THE NEW SCREENING TOOL SYSTEM



- up to 75% less maintenance costs
- interlocking system with no weldings
- easy replaceable discs and blades

(1) User is responsible for ensuring that the characteristics of the prime mover suit the weight and specifications of the attachment.

\* Different output size available on demand.

Simex does not accept responsibility or liability for the information provided. Technical modifications may vary without prior notice.

- Utilities
- Quarries and mines
- Demolition
- Port and underwater works
- Construction and building
- Infrastructure
- Tunneling
- Agriculture and forestry
- Recycling
- Roadworks
- Trenching
- Mini-excavator
- Excavator
- Skid steer loader
- Front loader
- Backhoe