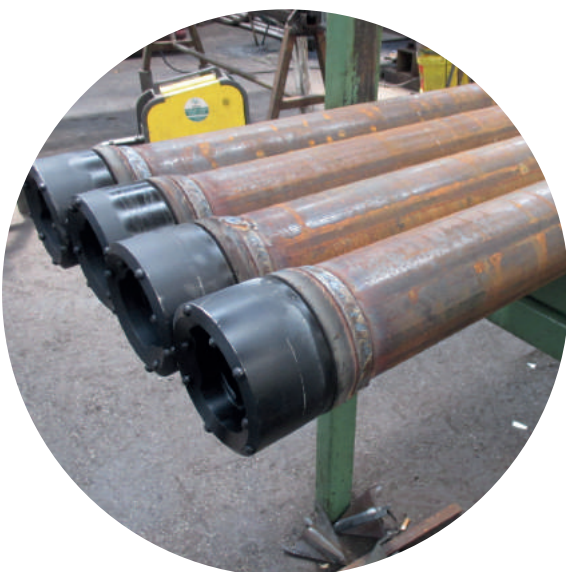


SPIRALFLUSH®



FOREPOLING SYSTEMS

FOREPOLING RING BITS AND CASINGS are designed for drilling injection casings for tunnel construction in weak ground conditions. Ring bit systems are designed for both top and DTH hammers. Ring bit systems can be delivered with or without the casings.



Main **applications** for forepoling systems are:

1. Spiling casings
2. Fibre glass face stabilization
3. PVC foundations

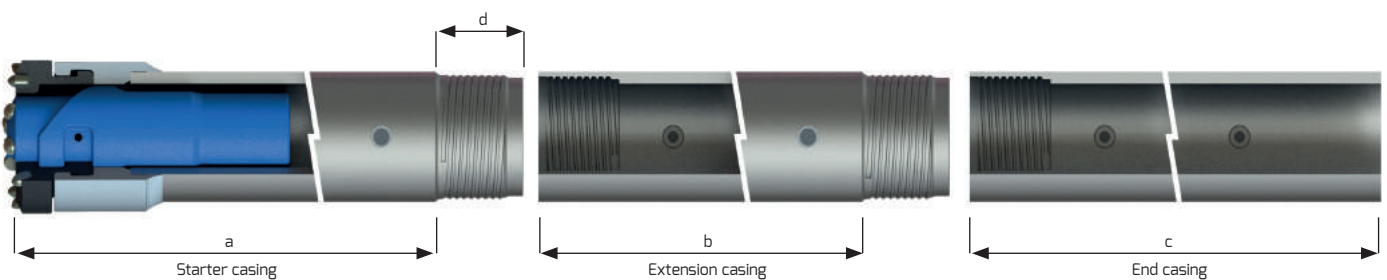
SPIRALFLUSH®



FOREPOLING SYSTEM DESIGN FEATURES

Casing shoe and ring bit are integrated with strong shoulders

Ring bit welded to starter casing in factory



Heavy duty ring bit protects the pilot gauge buttons

Optional one way valves for grouting installed in factory (3-10bar)

System is available from 76 to 216 mm casings and for all major DTH shanks and top hammer threads. Threaded casings are available with 2-3 start trapezoidal threads and 10mm entrance.

System product code	Casing OD mm	inch	Wall mm	Ring bit ID mm	Ring bit OD mm	Pilot bit OD mm	Lenght a/b/c m	Lenght d mm
F76-8-47	76,1	3"	7,1	47	89	59	2,95 / 3 / 3	80
F89-8-60	88,9	3.5"	6,3 / 7,1 / 8	60	105	71	2,95 / 3 / 3	80
F102-8-68	101,6	4"	7,1 / 8	68	118	80	2,95 / 3 / 3	80
F114-10-76	114,3	4.5"	6,3 / 7,1 / 8 / 10	76	130	89	2,95 / 3 / 3	100
F140-10-102	139,7	5.5"	7,1 / 8 / 10	102	156	116	2,95 / 3 / 3	100
F159-10-120	159	6.25"	8 / 10	120	175	136	2,95 / 3 / 3	100
F168-10-128	168,3	6.625"	8 / 10	128	184	145	2,95 / 3 / 3	100
F216-12.7-171	215,9	8.5"	8 / 10 / 12.7	171	237	186	2,95 / 3 / 3	100

