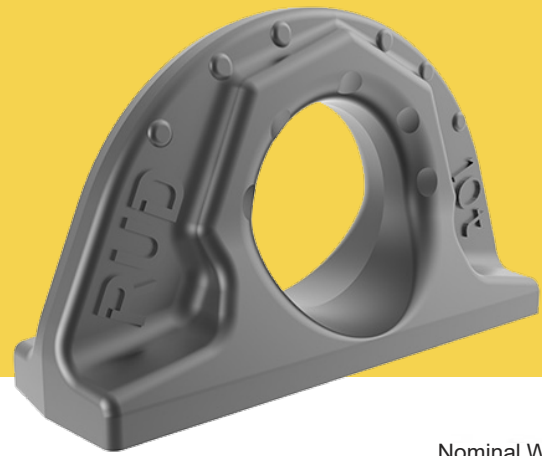




Weld-On Lifting Point - loadable from any side

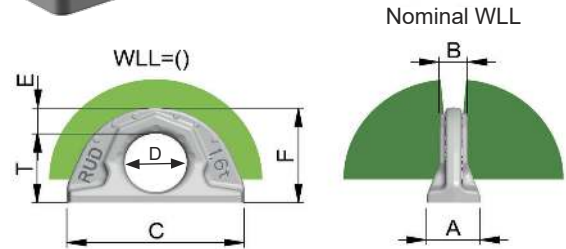


RUD-Atc-Nr.: 790095E-EN / 04.019

ABA

RUD weld-on lifting points ABA must only be used for the assembly at the load or at lifting means. They are intended to be hinged into lifting means.

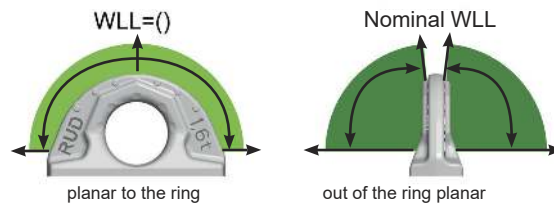
RUD weld-on lifting points ABA can also be used as lashing points to attach lashing means. Loading from any side is permitted.



Type	WLL [t]	A [mm]	B [mm]	C [mm]	D [mm]	E [mm]	F [mm]	T [mm]	weight [kg/pc]	ref-no.
ABA 0.8 t	0.8	22	12	70	32	12	50	38	0.20	7907698
ABA 1.6 t	1.6	30	16	100	35	16	57	41.5	0.44	7900352
ABA 3.2 t	3.2	41	23	137	50	21	80	59	1.1	7900353
ABA 5 t	5	51	27	172	60	27.5	99	71.5	2.3	7900354
ABA 10 t	10	70	38	228	80	35	130	95	5.3	7900355
ABA 20 t	20	90	52	272	115	40	175	135	10.7	7902174
ABA 31.5 t	31.5	108	64	320	130	50	204	154	18.3	7902175

Table 5: Dimensioning

Subject to technical alterations



Permitted loading directions
Position weld-on lifting points into the load force direction (permissible WLL at different loading directions).

Method of lift										
Number of legs	1	1	2	2	2	2	2	3 / 4	3 / 4	3 / 4
Angle of inclination	0°	90°	0°	90°	0-45°	>45-60°	Un-symm.	0-45°	>45-60°	Un-symm.
Factor	1	1	2	2	1.4	1	1	2.1	1.5	1
Type	For the max. total load weight >G< in metric tons									
ABA 0.8 t	0.8 (2)	0.8 (2)	1.6 (4)	1.6 (4)	1.12 (2.8)	0.8 (2)	0.8 (2)	1.6 (4.25)	1.18 (3)	0.8 (2)
ABA 1.6 t	1.6 (4)	1.6 (4)	3.2 (8)	3.2 (8)	2.2 (5.6)	1.6 (4)	1.6 (4)	3.4 (8.4)	2.4 (6)	1.6 (4)
ABA 3.2 t	3.2 (9)	3.2 (9)	6.4 (18)	6.4 (18)	4.5 (12.6)	3.2 (9)	3.2 (9)	6.7 (18.9)	4.8 (13.5)	3.2 (9)
ABA 5 t	5 (12)	5 (12)	10 (24)	10 (24)	7 (16.8)	5 (12)	5 (12)	10.5 (25.2)	7.5 (18)	5 (12)
ABA 10 t	10 (20)	10 (20)	20 (40)	20 (40)	14 (28)	10 (20)	10 (20)	21.2 (42)	15 (30)	10 (20)
ABA 20 t	20	20	40	40	28	20	20	42	30	20
ABA 31.5 t	31.5	31.5	63	63	45	31.5	31.5	67	47.5	31.5

Table 2: WLL overview () = WLL X planar to the ring WLL Y = Nominal Working Load

