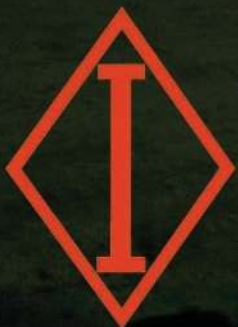


italricambi

your quality choice

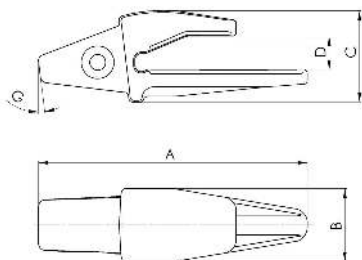


*high
performance
wear parts*

Caterpillar



- Portapunta two-strap heavy duty da saldare per escavatori
- Weld-on two-strap heavy duty adapters for excavators
- Zweisich. HD-Anschweiss-Halter für Baggerlöffel
- Adapteur two-strap heavy duty pour escavateurs
- Привариваемые двусторонние адаптеры для экскаваторов для особо тяжелых условий эксплуатации



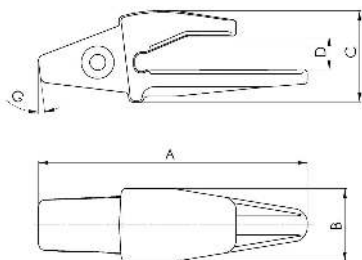
NS. RIF. OUR REF. U/REF. NOTRE REF. НОМЕР ИР	N. ORIGINALE ORIGINAL PIN ORIGINAL-NR. N. ORIGINAL ОРИГИНАЛЬНЫЙ НОМЕР	GRANDEZZA SIZE KLASSE CLASSE КЛАСС / РАЗМЕР	PESO (KG) WEIGHT GEWICHT POIDS ВЕС	SPESSORE LAMA EDGE THICKNESS MESSERSTÄRKE ÉPAISSEUR DE LAME ТОЛЩИНА КРОМКИ КОВША	DIMENSIONI - DIMENSIONS ABMESSUNGEN - DIMENSIONS - РАЗМЕРЫ					PUNTA TIP SPITZEN POINTE ИСПОЛЬЗУЕМЫЙ НАКОНЕЧНИК	MODELLO MODEL MODELL MODELE МОДЕЛЬ МАШИНЫ	FORZA DI STRAPPO (KG) BREAK-OUT FORCE BRUCHFESTIGKEIT FORCE D'ARRACHEMENT УСИЛИЕ КОПАНИЯ	
					A (mm)	B (mm)	C (mm)	D (mm)	G (°)				
C02E	119-3204	*	2	1,6	25	182	54	70	27	9°	1U3201 1U3202 9W8208	416,44	6000
C101E	6Y3224		2,2	2,9	22	225	59	79	25	8° 50'	6Y3221 6Y3222 1U3209	446,307, E70	8000
C1E	6Y3254		2,5	4,2	25	250	74	80	26	7°	1U3251 1U3252 9N4252	311,312,E200	10000
C1EA	119-3253		2,5	3,6	32	256	65	89	33	10°	1U3251 1U3252 9N4252	311,312,E200	10000
C6E	3G6304			7,5	32	310	84	100	33		1U3301		
C6E-D	3G6305	3		6,7	32	310	84	100	33	7°	1U3302	215,E180	13000
C6E-S	3G6306			6,7	32	310	84	100	33		9N4302		
C6E/1	8E9490		3	6,5	36	314	84	110	36,5	10°	1U3301 1U3302 9N4302	320,315	13000
C11E	7T3354			9,5	40	340	92	115	42		1U3351		
C11E-D	7T3355	3,5		8,6	40	340	92	115	42	7°	1U3352	225, E240 B/C/S	16000
C11E-S	7T3356			8,6	40	340	92	115	42		9N4352		
C11EA	6I6354			8,6	40	350	92	111	42		1U3351		
C11EA-D	6I6355	3,5		8	40	350	92	111	42	11°	1U3352	225, E240 B/C/S	16000
C11EA-S	6I6356			8	40	350	92	111	42		9N4352		
C116E	6I6404			15,8	45	381	120	138	46,5		7T3401		
C116E-D	6I6405	4		15	45	381	120	138	46,5	11°	7T3402	231D C/D/S	20000
C116E-S	6I6406			15	45	381	120	138	46,5		8E4402		
C16EX	159-0464			19,5	50	430	125	156	52		9W8451		
C16EX-D	159-0465	4,6		18,7	50	430	125	156	52	9° 30'	9W8452	235, E300 D/E/F	25000
C16EX-S	159-0466			18,7	50	430	125	156	52		9N4452		
C21E	6I6554			30,5	60	520	150	182,5	61		9W8551		
C21E-D	6I6555	5,5		29,5	60	520	150	182,5	61	10°	9W8552	245 E/F/G/H	40000
C21E-S	6I6556			29,5	60	520	150	182,5	61		9N4552		
C76E	6I6604			55	70	564	190	202,5	75		6I6601		
C76E-D	6I6605	*	6		70	564	190	202,5	75	9°	6I6602	375 H/J	50000
C76E-S	6I6606	*			70	564	190	202,5	75		7Y0602		

* to be made according to a specific request

Tutti i numeri, simboli, e denominazioni originali sono usati soltanto per riferimento, e non si deve in alcun modo intendere che i pezzi elencati siano originali. All manufacturers' name, numbers, symbols and descriptions are used for reference purpose only, and it is not implied that any part listed is the product of these manufacturers.



- Portapunta two-strap heavy duty da saldare per escavatori
- Weld-on two-strap heavy duty adapters for excavators
- Zweisich. HD-Anschweiss-Halter für Baggerlöffel
- Adapteur two-strap heavy duty pour escavateurs
- Привариваемые двусторонние адаптеры для экскаваторов для особо тяжелых условий эксплуатации



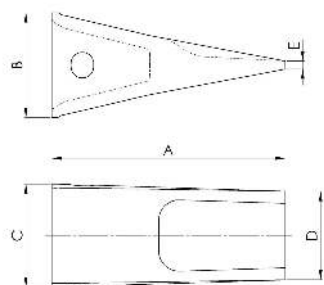
NS. RIF. OUR REF. U/REF. NOTRE REF. НОМЕР ИР	N. ORIGINALE ORIGINAL PIN ORIGINAL-NR. N. ORIGINAL ОРИГИНАЛЬНЫЙ НОМЕР	GRANDEZZA SIZE KLASSE CLASSE КЛАСС/ РАЗМЕР	PESO (KG) WEIGHT GEWICHT POIDS ВЕС	SPESSORE LAMA EDGE THICKNESS MESSERSTÄRKE ÉPAISSEUR DE LAME ТОЛЩИНА КРОМКИ КОВША	DIMENSIONI - DIMENSIONS ABMESSUNGEN - DIMENSIONS - РАЗМЕРЫ					PUNTA TIP SPITZEN POINTE ИСПОЛЪЗУЕМЫЙ НАКОНЕЧНИК	MODELLO MODEL MODELL MODELE МОДЕЛЬ МАШИНЫ	FORZA DI STRAPPO (KG) BREAK-OUT FORCE BRUCHFESTIGKEIT FORCE D'ARRACHEMENT УСИЛИЕ КОПАНИЯ
					A (mm)	B (mm)	C (mm)	D (mm)	G (°)			
C76E/1	113-9604	*		80	580	190	202,5	85		6I6601		
C76E/1-D	113-9605	*	6	80	580	190	202,5	85		6I6602	375 (J)	
C76E/1-S	113-9606	*		80	580	190	202,5	85		7Y0602		
C86E	132-4704	*	72,7	80	690	180	205	82	15°	4T4702		
C86E-D	132-4705	*	7	80	690	180	205	82	15°	4T4709	375 (J)	
C86E-S	132-4706	*		80	690	180	205	82	15°	9U9702		
C86E/1	222-7700	*	7	92,2	90	718	190	244	8°	4T4702 4T4709 9U9702		
										6I8802		
C96E	6I8804	*	8	110	100	705	230	270	105	16°	117-6809	385 (JB)

* to be made according to a specific request

Tutti i numeri, simboli, e denominazioni originali sono usati soltanto per riferimento, e non si deve in alcun modo intendere che i pezzi elencati siano originali. All manufacturers' name, numbers, symbols and descriptions are used for reference purpose only, and it is not implied that any part listed is the product of these manufacturers.



- Punta long
- Long tips
- Lange Spitzen
- Pointes longues
- Длинные наконечники



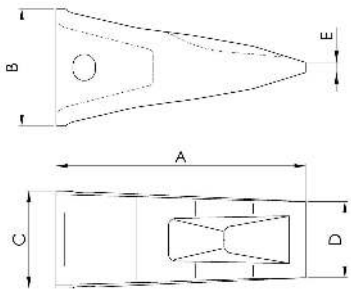
NS. RIF. OUR REF. U/REF. NOTRE REF. НОМЕР ИР	N. ORIGINALE ORIGINAL P/N ORIGINAL-NR. N. ORIGINAL ОРИГИНАЛЬНЫЙ НОМЕР	GRANDEZZA (*) SIZE (*) KLASSE (*) CLASSE (*) КЛАСС / РАЗМЕР	PESO (KG) WEIGHT GEWICHT POIDS ВЕС	DIMENSIONI - DIMENSIONS ABMESSUNGEN - DIMENSIONS - РАЗМЕРЫ					PORTAPUNTA ADAPTERS HALTER ADAPTEUR ИСПОЛЬЗУЕМЫЙ АДАПТЕР	PERNO PIN KEIL АХЕ ПАЛЕЦ	ANELLO LINK RING RONDELLE ШАЙБА
				A (mm)	B (mm)	C (mm)	D (mm)	E (mm)			
C05	1U3202	2	1,2	146	62	56	50	5	C01 (4T1204) C02/7 (8J7525) C0B (9J4207)	8E6208	8E6209
C103	6Y3222	2,2	2,1	170	80	68	56	5	C101E (6Y3224)	6Y3228 132-4762	8E6259
C3	1U3252	2,5	3	198	86	76	64	8	C1 (1U1254) C1EA (119-3253) C1B (1U0257)	8E6258 132-4763	8E6259
C8	1U3302	3	4,2	220	96	88	73	7	C6 (1U1304) C6E (3G6304) C6B2 (4T4307)	9J2308 132-4766	8E6259
C13	1U3352	3,5	5,9	245	107	102	85	8	C11 (1U1354) C11EA (6I6354) C11B3 (3G3357)	8E6358 114-0358	8E6359
C118	7T3402	4	9,7	267	124	119	107	10	C116 (107-3404) C116E (6I6404) C116PHD (125-8404)	7T3408 116-7408	8E8409
C18	9W8452	4,6	10	290	126	128	108	10	C16X (8E0464) C16EX (159-0464) C16PHDX (114-0464)	8E0468 114-0468	8E8469
C23R	9W8552	5,5	17,3	336	145	154	140	12	C21 (7J9554) C21E (6I6554) C21PHD (138-6554)	6Y8558 107-3378	8E5559
C78	6I6602	6	35	395	186	195	170	12	C76E (6I6604) C76PHD (119-8604)	6I6608 113-9608	6I6609 113-9609
C88	4T4702	*	7	39	420	202	202	180	C86E/1 (222-7700) C86PHD (143-3114)	113-4708	113-4709
C98	6I8802	*	8	54	490	250	245	210	C96E (6I8804)	134-1808	134-1809

* to be made according to a specific request

Tutti i numeri, simboli, e denominazioni originali sono usati soltanto per riferimento, e non si deve in alcun modo intendere che i pezzi elencati siano originali. All manufacturers' name, numbers, symbols and descriptions are used for reference purpose only, and it is not implied that any part listed is the product of these manufacturers.



- Punta heavy duty long
- Heavy duty long tips
- Heavy-Duty-Long-Spitzen
- Pointes heavy duty long
- Длинные наконечники для тяжелых условий эксплуатации



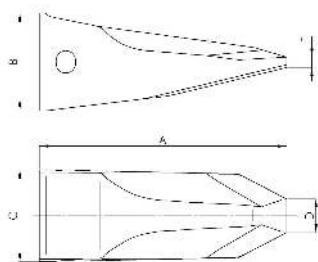
NS. RIF. OUR REF. U/REF. NOTRE REF. НОМЕР ИР	N. ORIGINALE ORIGINAL P/N ORIGINAL-NR. N. ORIGINAL ОРИГИНАЛЬНЫЙ НОМЕР	GRANDEZZA (*) SIZE (*) KLASSE (*) CLASSE (*) КЛАСС / РАЗМЕР	PESO (KG) WEIGHT GEWICHT POIDS ВЕС	DIMENSIONI - DIMENSIONS ABMESSUNGEN - DIMENSIONS - РАЗМЕРЫ					PORTAPUNTA ADAPTERS HALTER ADAPTEUR ИСПОЛЬЗУЕМЫЙ АДАПТЕР	PERNO PIN KEIL AXE ПАЛЕЦ	ANELLO LINK RING RONDELLE ШАЙБА
				A (mm)	B (mm)	C (mm)	D (mm)	E (mm)			
C103LR	8E4222	* 2,2	2,5	177	80	65	50	6	C101E (6Y3224)	6Y3228	8E6259
C3LR	9N4252	2,5	3,9	200	94	78	61	8	C1 (1U1254) C1EA (119-3253) C1B (1U0257)	8E6258 132-4763	8E6259
C8LR	9N4302	3	5,2	223	106	91,5	69	7	C6 (1U1304) C6E (3G6304) C6B2 (4T4307)	9J2308 132-4766	8E6259
C13LR	9N4352	3,5	8,3	253	116	104,5	88	7	C11 (1U1354) C11EA (6I6354) C11B3 (3G3357)	8E6358 114-0358	8E6359
C118LR	8E4402	4	11	278	130	119	101	8	C116 (107-3404) C116E (6I6404) C116PHD (125-8404)	7T3408 116-7408	8E8409
C18LR	9N4452	4,6	16,1	310	142	138	117	10	C16X (8E0464) C16EX (159-0464) C16PHDX (114-0464)	8E0468 114-0468	8E8469
C23LR	9N4552	5,5	25,1	352	164	162	145	11	C21 (7J9554) C21E (6I6554) C21PHD (138-6554)	6Y8558 107-3378	8E5559
C78LR	7Y0602	* 6	42	415	200	195	170	12	C76E (6I6604) C76PHD (119-8604)	6I6608 113-9608	6I6609 113-9609
C88LR	9U9702	* 7	55	450	215	205	180	15	C96E (6I8804)	134-1808	134-1809

* to be made according to a specific request

Tutti i numeri, simboli, e denominazioni originali sono usati soltanto per riferimento, e non si deve in alcun modo intendere che i pezzi elencati siano originali. All manufacturers' name, numbers, symbols and descriptions are used for reference purpose only, and it is not implied that any part listed is the product of these manufacturers.



- Punta heavy duty abrasion
- Heavy duty abrasion tips
- Heavy-Duty-Abrasion-Spitzen
- Pointes heavy duty abrasion
- наконечники для тяжелых абразивных условий эксплуатации



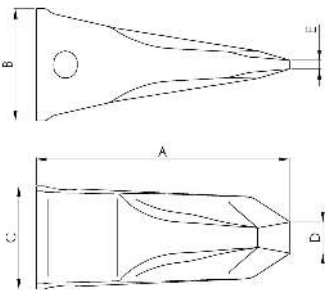
NS. RIF. OUR REF. U/REF. NOTRE REF. НОМЕР ИР	N. ORIGINALE ORIGINAL P/N ORIGINAL-NR. N. ORIGINAL ОРИГИНАЛЬНЫЙ НОМЕР	GRANDEZZA (*) SIZE (*) KLASSE (*) CLASSE (*) КЛАСС / РАЗМЕР	PESO (KG) WEIGHT GEWICHT POIDS ВЕС	DIMENSIONI - DIMENSIONS ABMESSUNGEN - DIMENSIONS - РАЗМЕРЫ					PORTAPUNTA ADAPTERS HALTER ADAPTEUR ИСПОЛЬЗУЕМЫЙ АДАПТЕР	PERNO PIN KEIL AXE ПАЛЕЦ	ANELLO LINK RING RONDELLE ШАЙБА
				A (mm)	B (mm)	C (mm)	D (mm)	E (mm)			
C3RP2		* 2,5							C1 (1U1254) C1EA (119-3253) C1B (1U0257)	8E6258 132-4763	8E6259
C8RP2	135-9300	3	7	250	108	88	30	9,2	C6 (1U1304) C6E (3G6304) C6B2 (4T4307)	9J2308 132-4766	8E6259
C13RP2	144-1358	3,5	10,7	290	120	110	35	10,6	C11 (1U1354) C11EA (6I6354) C11B3 (3G3357)	8E6358 114-0358	8E6359
C118RP2	135-9400	* 4	14,8	312	130	119	35	15,1	C116 (107-3404) C116E (6I6404) C116PHD (125-8404)	7T3408 116-7408	8E8409
C18RP2	138-6451	4,6	19,6	355	140	132	48	15	C16X (8E0464) C16EX (159-0464) C16PHDX (114-0464)	8E0468 114-0468	8E8469
C23RP3	138-6552	5,5	27,4	385	154	160	55	19	C21 (7J9554) C21E (6I6554) C21PHD (138-6554)	6Y8558 107-3378	8E5559
C78RP2	135-9600	6	49	450	200	195	65	23	C76E (6I6604) C76PHD (119-8604)	6I6608 113-9608	6I6609 113-9609
C88RP2	135-9700	7	64,5	495	215	205	180	20	C86E/1 (222-7700) C86PHD (143-3114)	113-4708	113-4709
C98RP2	135-9800	* 8	110	565	255	250	210	22	C96E (6I8804)	134-1808	134-1809

* to be made according to a specific request

Tutti i numeri, simboli, e denominazioni originali sono usati soltanto per riferimento, e non si deve in alcun modo intendere che i pezzi elencati siano originali. All manufacturers' name, numbers, symbols and descriptions are used for reference purpose only, and it is not implied that any part listed is the product of these manufacturers.



- Punta penetration plus
- Penetration plus tips
- Penetration-Plus-Spitzen
- Pointes penetration plus
- наконечники для улучшенного проникновения



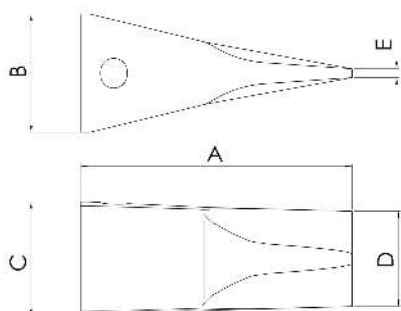
NS. RIF. OUR REF. U/REF. NOTRE REF. НОМЕР ИР	N. ORIGINALE ORIGINAL P/N ORIGINAL-NR. N. ORIGINAL ОРИГИНАЛЬНЫЙ НОМЕР	GRANDEZZA (*) SIZE (*) KLASSE (*) CLASSE (*) КЛАСС / РАЗМЕР	PESO (KG) WEIGHT GEWICHT POIDS ВЕС	DIMENSIONI - DIMENSIONS ABMESSUNGEN - DIMENSIONS - РАЗМЕРЫ					PORTAPUNTA ADAPTERS HALTER ADAPTEUR ИСПОЛЬЗУЕМЫЙ АДАПТЕР	PERNO PIN KEIL АХЕ ПАЛЕЦ	ANELLO LINK RING RONDELLE ШАЙБА
				A (mm)	B (mm)	C (mm)	D (mm)	E (mm)			
C3RC		* 2,5							C1 (1U1254) C1EA (119-3253) C1B (1U0257)	8E6258 132-4763	8E6259
C8RC	183-5300	3	5,9	250	108	88	30	8	C6 (1U1304) C6E (3G6304) C6B2 (4T4307)	9J2308 132-4766	8E6259
C13RC	168-1359	3,5	7,9	280	116	104,5	30	9	C11 (1U1354) C11EA (6I6354) C11B3 (3G3357)	8E6358 114-0358	8E6359
C118RC	168-1409	4	11,3	300	133	122	38	10,5	C116 (107-3404) C116E (6I6404) C116PHD (125-8404)	7T3408 116-7408	8E8409
C18RC	159-0459	4,6	14,8	330	140	132	40	10	C16X (8E0464) C16EX (159-0464) C16PHDX (114-0464)	8E0468 114-0468	8E8469
C23RC	159-0559	5,5	23,7	385	154	160	45	12	C21 (7J9554) C21E (6I6554) C21PHD (138-6554)	6Y8558 107-3378	8E5559
C78RC	159-0607	6	44,5	450	200	195	65	15	C76E (6I6604) C76PHD (119-8604)	6I6608 113-9608	6I6609 113-9609
C88RC	171-1709	7	55	495	215	205	75	15	C86E/1 (222-7700) C86PHD (143-3114)	113-4708	113-4709
C98RC		* 8	92	565	255	250	210	15	C96E (6I8804)	134-1808	134-1809

* to be made according to a specific request

Tutti i numeri, simboli, e denominazioni originali sono usati soltanto per riferimento, e non si deve in alcun modo intendere che i pezzi elencati siano originali. All manufacturers' name, numbers, symbols and descriptions are used for reference purpose only, and it is not implied that any part listed is the product of these manufacturers.



- Punte „V“
- „V“ tips
- „V“-Spitzen
- Pointes „V“
- симметричные наконечники (V тип)



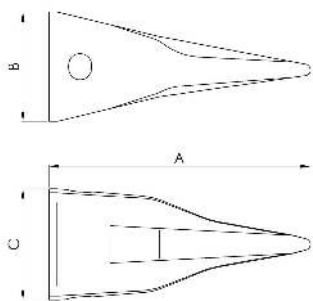
NS. RIF. OUR REF. U/REF. NOTRE REF. НОМЕР ИР	N. ORIGINALE ORIGINAL P/N ORIGINAL-NR. N. ORIGINAL ОРИГИНАЛЬНЫЙ НОМЕР	GRANDEZZA (*) SIZE (*) KLASSE (*) CLASSE (*) КЛАСС / РАЗМЕР	PESO (KG) WEIGHT GEWICHT POIDS ВЕС	DIMENSIONI - DIMENSIONS ABMESSUNGEN - DIMENSIONS - РАЗМЕРЫ					PORTAPUNTA ADAPTERS HALTER ADAPTEUR ИСПОЛЬЗУЕМЫЙ АДАПТЕР	PERNO PIN KEIL AXE ПАЛЕЦ	ANELLO LINK RING RONDELLE ШАЙБА
				A (mm)	B (mm)	C (mm)	D (mm)	E (mm)			
C05V	1U3202V	2	1,2	146	62	56	50	5	C01 (4T1204) C02/7 (8J7525) C0B (9J4207)	8E6208	8E6209
C103V	6Y3222V	2,2	2	170	80	68	56	6	C101E (6Y3224)	6Y3228 132-4762	8E6259
C3V	1U3252V	2,5	3,3	198	86	76	64	7	C1 (1U1254) C1EA (119-3253) C1B (1U0257)	8E6258 132-4763	8E6259
C8V	1U3302V	3	4,1	220	96	88	74	8	C6 (1U1304) C6E (3G6304) C6B2 (4T4307)	9J2308 132-4766	8E6259
C13V	1U3352V	3,5	5,8	245	107	103	86	8	C11 (1U1354) C11EA (6I6354) C11B3 (3G3357)	8E6358 114-0358	8E6359
C118V	7T3402V	4	10,1	280	124	119	107	8	C116 (107-3404) C116E (6I6404) C116PHD (125-8404)	7T3408 116-7408	8E8409
C18V	9W8452V	4,6	11	290	126	128	112	10	C16X (8E0464) C16EX (159-0464) C16PHDX (114-0464)	8E0468 114-0468	8E8469
C23V	9W8552V	5,5	17,6	350	145	154	140	10	C21 (7J9554) C21E (6I6554) C21PHD (138-6554)	6Y8558 107-3378	8E5559
C78V	6I6602V	*	6	35	395	186	195	170	C76E (6I6604) C76PHD (119-8604)	6I6608 113-9608	6I6609 113-9609
C88V	4T4702V	*	7	39	420	202	202	180	C86E/1 (222-7700) C86PHD (143-3114)	113-4708	113-4709
C98V	6I8802V	*	8	54	490	250	245	210	C96E (6I8804)	134-1808	134-1809

* to be made according to a specific request

Tutti i numeri, simboli, e denominazioni originali sono usati soltanto per riferimento, e non si deve in alcun modo intendere che i pezzi elencati siano originali. All manufacturers' name, numbers, symbols and descriptions are used for reference purpose only, and it is not implied that any part listed is the product of these manufacturers.



- Punta sharp
- Sharp tips
- Sharp-Spitzen
- Pointes sharp
- заостренные наконечники



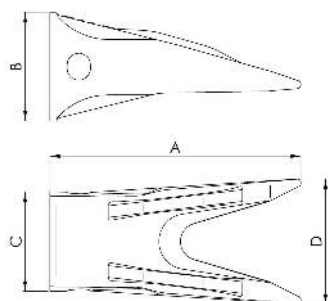
NS. RIF. OUR REF. U/REF. NOTRE REF. НОМЕР ИР	N. ORIGINALE ORIGINAL P/N ORIGINAL-NR. N. ORIGINAL ОРИГИНАЛЬНЫЙ НОМЕР	GRANDEZZA (*) SIZE (*) KLASSE (*) CLASSE (*) КЛАСС / РАЗМЕР	PESO (KG) WEIGHT GEWICHT POIDS ВЕС	DIMENSIONI - DIMENSIONS ABMESSUNGEN - DIMENSIONS - РАЗМЕРЫ			PORTAPUNTA ADAPTERS HALTER ADAPTEUR ИСПОЛЬЗУЕМЫЙ АДАПТЕР	PERNO PIN KEIL АХЕ ПАЛЕЦ	ANELLO LINK RING RONDELLE ШАЙБА
				A (mm)	B (mm)	C (mm)			
C05SC	9W8209	* 2		146	62	56	C01 (4T1204) C02/7 (8J7525) C0B (9J4207)	8E6208	8E6209
C103SC	6Y7229	* 2,2					C101E (6Y3224)	6Y3228 132-4762	8E6259
C3SC	9W8259	* 2,5					C1 (1U1254) C1EA (119-3253) C1B (1U0257)	8E6258 132-4763	8E6259
C8SC	9W8309	3	4,2	240	102	94	C6 (1U1304) C6E (3G6304) C6B2 (4T4307)	9J2308 132-4766	8E6259
C13SC	9W2359	3,5	6,2	265	114	110	C11 (1U1354) C11EA (6I6354) C11B3 (3G3357)	8E6358 114-0358	8E6359
C118SC	6Y5409	* 4		290	130	119	C116 (107-3404) C116E (6I6404) C116PHD (125-8404)	7T3408 116-7408	8E8409
C18SC	7T8459	4,6	10,2	320	134	136	C16X (8E0464) C16EX (159-0464) C16PHDX (114-0464)	8E0468 114-0468	8E8469
C23SC	9W6559	5,5	16	365	153	160	C21 (7J9554) C21E (6I6554) C21PHD (138-6554)	6Y8558 107-3378	8E5559
C78SC	107-8609	* 6					C76E (6I6604) C76PHD (119-8604)	6I6608 113-9608	6I6609 113-9609

* to be made according to a specific request

Tutti i numeri, simboli, e denominazioni originali sono usati soltanto per riferimento, e non si deve in alcun modo intendere che i pezzi elencati siano originali. All manufacturers' name, numbers, symbols and descriptions are used for reference purpose only, and it is not implied that any part listed is the product of these manufacturers.



- Punta twin tiger
- Twin tiger tips
- Twin-Tiger-Spitzen
- Pointes twin tiger
- заостренные двойные наконечники (твин тайгер)



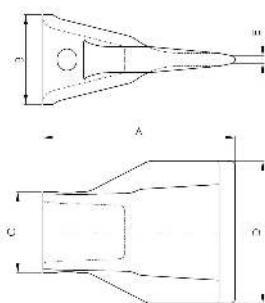
NS. RIF. OUR REF. U/REF. NOTRE REF. НОМЕР ИР	N. ORIGINALE ORIGINAL P/N ORIGINAL-NR. N. ORIGINAL ОРИГИНАЛЬНЫЙ НОМЕР	GRANDEZZA (*) SIZE (*) KLASSE (*) CLASSE (*) КЛАСС / РАЗМЕР	PESO (KG) WEIGHT GEWICHT POIDS ВЕС	DIMENSIONI - DIMENSIONS ABMESSUNGEN - DIMENSIONS - РАЗМЕРЫ				PORTAPUNTA ADAPTERS HALTER ADAPTEUR ИСПОЛЬЗУЕМЫЙ АДАПТЕР	PERNO PIN KEIL AXE ПАЛЕЦ	ANELLO LINK RING RONDELLE ШАЙБА
				A (mm)	B (mm)	C (mm)	D (mm)			
C05TT	135-8208	* 2						C01 (4T1204) C02/7 (8J525) C0B (9J4207)	8E6208	8E6209
C3TT	135-8258	* 2,5						C1 (1U1254) C1EA (119-3253) C1B (1U0257)	8E6258 132-4763	8E6259
C8TT	135-9308	3	5,4	250	102	94	120	C6 (1U1304) C6E (3G6304) C6B2 (4T4307)	9J2308 132-4766	8E6259
C13TT	135-9357	3,5	7,5	275	114	110	140	C11 (1U1354) C11EA (6I6354) C11B3 (3G3357)	8E6358 114-0358	8E6359
C118TT	135-9408	4	10,1	300	130	119	150	C116 (107-3404) C116E (6I6404) C116PHD (125-8404)	7T3408 116-7408	8E8409
C18TT	138-6458	4,6	14,7	330	134	136	180	C16X (8E0464) C16EX (159-0464) C16PHDX (114-0464)	8E0468 114-0468	8E8469
C23TT	138-6558	5,5	24,1	375	153	162	220	C21 (7J9554) C21E (6I6554) C21PHD (138-6554)	6Y8558 107-3378	8E5559
C78TT	135-9608	* 6						C76E (6I6604) C76PHD (119-8604)	6I6608 113-9608	6I6609 113-9609

* to be made according to a specific request

Tutti i numeri, simboli, e denominazioni originali sono usati soltanto per riferimento, e non si deve in alcun modo intendere che i pezzi elencati siano originali. All manufacturers' name, numbers, symbols and descriptions are used for reference purpose only, and it is not implied that any part listed is the product of these manufacturers.



- Punta wide
- Wide tips
- Wide-Spitzen
- Pointes wide
- уширенные наконечники



NS. RIF. OUR REF. U/REF. NOTRE REF. НОМЕР ИР	N. ORIGINALE ORIGINAL P/N ORIGINAL-NR. N. ORIGINAL ОРИГИНАЛЬНЫЙ НОМЕР	GRANDEZZA (*) SIZE (*) KLASSE (*) CLASSE (*) КЛАСС / РАЗМЕР	PESO (KG) WEIGHT GEWICHT POIDS ВЕС	DIMENSIONI - DIMENSIONS ABMESSUNGEN - DIMENSIONS - РАЗМЕРЫ					PORTAPUNTA ADAPTERS HALTER ADAPTEUR ИСПОЛЬЗУЕМЫЙ АДАПТЕР	PERNO PIN KEIL AXE ПАЛЕЦ	ANELLO LINK RING RONDELLE ШАЙБА
				A (mm)	B (mm)	C (mm)	D (mm)	E (mm)			
C05W	109-9200	* 2	1,7	155	65	56	102	5	C01 (4T1204) C02/7 (8J7525) C0B (9J4207)	8E6208	8E6209
C3W	3G8250	* 2,5	3,2	200	86	76	112	7	C1 (1U1254) C1EA (119-3253) C1B (1U0257)	8E6258 132-4763	8E6259
C8W	107-3300	* 3	5,7	220	102	88	150	8	C6 (1U1304) C6E (3G6304) C6B2 (4T4307)	9J2308 132-4766	8E6259
C13W	107-3350	* 3,5	8,5	240	116	104,5	178	8	C11 (1U1354) C11EA (6I6354) C11B3 (3G3357)	8E6358 114-0358	8E6359
C118W	107-3400	* 4	11,5	268	130	119	207	10	C116 (107-3404) C116E (6I6404) C116PHD (125-8404)	7T3408 116-7408	8E8409
C18W	107-3450	* 4,6	16,5	295	142	138	225	10	C16X (8E0464) C16EX (159-0464) C16PHDX (114-0464)	8E0468 114-0468	8E8469
C23W	107-3550	* 5,5	25,5	336	164	162	278	12	C21 (7J9554) C21E (6I6554) C21PHD (138-6554)	6Y8558 107-3378	8E5559

* to be made according to a specific request

Tutti i numeri, simboli, e denominazioni originali sono usati soltanto per riferimento, e non si deve in alcun modo intendere che i pezzi elencati siano originali. All manufacturers' name, numbers, symbols and descriptions are used for reference purpose only, and it is not implied that any part listed is the product of these manufacturers.